

A Beginner's Tutorial

Oracle SQL

Data Definition

Data Manipulation

Indexing

PL/SQL

Data Dictionary

Djoni Darmawikarta

Oracle SQL

A Beginner's Tutorial

Djoni Darmawikarta

Oracle SQL: A Beginner's Tutorial
Copyright © 2014 Brainy Software Inc.
First Edition: April 2014

All rights reserved. No part of this book may be reproduced or transmitted in any form or by any means, electronic or mechanical, including photocopying, recording, or by any information storage and retrieval system, without written permission from the publisher, except for the inclusion of brief quotations in a review

ISBN: 978-0-9808396-4-7

Book and Cover Designer: Mona Setiadi

Technical Reviewer: Budi Kurniawan
Indexer: Chris Mayle

Trademarks

Oracle and Java are registered trademarks of Oracle and/or its affiliates.
UNIX is a registered trademark of The Open Group.
Microsoft Internet Explorer is either a registered trademark or a trademark of Microsoft Corporation in The United States and/or other countries.
Apache is a trademark of The Apache Software Foundation.
Firefox is a registered trademark of the Mozilla Foundation.
Google is a trademark of Google, Inc.

Throughout this book the printing of trademarked names without the trademark symbol is for editorial purpose only. We have no intention of infringement of the trademark.

Warning and Disclaimer

Every effort has been made to make this book as accurate as possible. The author and the publisher shall have neither liability nor responsibility to any person or entity with respect to any loss or damages arising from the information in this book.

Table of Contents

Introduction.....	1
SQL Overview.....	1
About This Book.....	2
Code Download.....	3
Chapter 1: Storing and Maintaining Data.....	5
Selecting A Database to Use.....	5
Creating a Table.....	6
Adding Data.....	7
Updating Data.....	9
Deleting Data.....	10
Summary.....	12
Chapter 2: Basic Queries.....	13
The SELECT statement.....	13
Querying All Data.....	13
Selecting Specific Columns.....	14
Selecting Rows with WHERE.....	15
Compound Conditions.....	16
Evaluation Precedence and the Use of Parentheses.....	18
The NOT logical operator.....	19
The BETWEEN Operator.....	20
The IN Operator.....	20
The LIKE Operator.....	21
Escaping the Wildcard Character.....	22
Combining the NOT operator.....	23
Summary.....	24
Chapter 3: Query Output.....	25

Column Aliases.....	25
Expressions.....	26
Limiting the Number of Rows.....	27
The DISTINCT Keyword.....	28
Aggregate Functions.....	29
Ordering Output Rows.....	33
Storing Query Output.....	37
Summary.....	39
Chapter 4: Grouping.....	41
The GROUP BY Clause.....	41
The HAVING Keyword.....	43
Summary.....	45
Chapter 5: Joins.....	47
Primary Keys and Foreign Keys.....	47
Querying Multiple Tables.....	48
Using Table Aliases.....	50
Joining More than Two Tables.....	50
Outer Joins.....	53
Self-Joins.....	56
Multiple Uses of A Table.....	58
Natural Joins.....	59
Summary.....	61
Chapter 6: Subqueries.....	63
Single-Row Subqueries.....	63
Multiple-Row Subqueries.....	65
Multiple Nested Subqueries.....	69
Correlated Subqueries.....	70
Summary.....	71
Chapter 7: Compound Queries.....	73
UNION ALL.....	73
UNION.....	75
INTERSECT.....	76
MINUS.....	77
Summary.....	78
Chapter 8: Views.....	79
Creating and Using Views.....	79
Nested Views.....	83
Managing Views.....	83

Summary.....	84
Chapter 9: Built-in Functions.....	85
Numeric Functions.....	85
Character Functions.....	88
Datetime Functions.....	91
NULL-related functions.....	92
Summary.....	96
Chapter 10: PL/SQL.....	97
Row-by-row Processing.....	97
If-Then-Else Decision Logic.....	101
User-defined Functions.....	105
Summary.....	106
Chapter 11: The Data Dictionary.....	107
The Dictionary View.....	107
The User_Catalog View.....	108
The User_Tab_Cols View.....	109
The User_Procedures View.....	110
The User_Source View.....	110
Summary.....	111
Appendix A: Installing Oracle Database XE.....	113
Downloading Oracle Database XE.....	113
Installing Oracle Database XE.....	114
Creating a User with SQL*Plus.....	117
Appendix B: Oracle Built-in Data Types.....	121
Appendix C: Indexes.....	123
Creating an Index.....	123
Multi-Column Indexes.....	124
Bitmap Indexes.....	124
Bitmap Join Indexes.....	125
Function-based Indexes.....	125
Deleting An Index.....	126
Index.....	127

Introduction

Welcome to *Oracle SQL: A Beginner's Tutorial*. This book is for you if you want to learn SQL the easy way. SQL, which stands for Structured Query Language and is pronounced es-cue-el, is the standard language you use to interact with a relational database management system (RDBMS). This book uses the free edition of the Oracle database to show how SQL works.

SQL Overview

Initially developed at IBM in the early 1970s, SQL was formalized by the American National Standards Institute (ANSI) in 1986. Since then the SQL standard has been revised seven times. The examples in this book were tested using Oracle database 11g Release 2, which conforms to the SQL:2008 standard. This standard is one revision earlier than SQL:2011, the latest standard.

SQL consists of a data definition language (DDL) and a data manipulation language (DML). The DDL is used to create, delete, and alter the structure of a table and other database objects. The DML is used to insert, retrieve, and update data in a table or tables.

Many database vendors implement a version of SQL that is not 100% compliant with the standard. They often add unique features to their SQL, resulting in an SQL dialect. For example, the following are some of the differences between Oracle and MySQL.

- The **AS** reserved word in the CREATE TABLE AS INSERT statement is mandatory in Oracle but optional in MySQL
- An Oracle INSERT statement can only insert one row; a MySQL INSERT statement can insert multiple rows.

- Oracle supports UNION, INTERSECT and MINUS set operators whereas MySQL only supports UNION.
- Oracle's PL/SQL equivalent in MySQL is the stored routine (MySQL did not give a name to its procedural language extension). PL/SQL has much more functions than the stored routine.

Because of these dialects, SQL statements written for one RDBMS may not necessarily work in other RDBMS's.

About This Book

This book consists of eleven chapters and three appendixes. This section gives you an overview of each chapter and appendix.

Chapter 1, "Storing and Maintaining Data" starts the book by discussing how data is stored and maintained in a relational database. In this chapter you learn how to use SQL INSERT, UPDATE, and DELETE statements.

Chapter 2, "Basic Queries" explains how to construct queries using the SELECT statement.

Chapter 3, "Query Output" shows how you can format query outputs beyond simply displaying columns of data from a database.

Chapter 4, "Grouping" explains what a group is, how to create a group, and how to apply aggregate functions to a group.

Chapter 5, "Joins" talks about the JOIN clause for querying data from multiple tables.

Chapter 6, "Subqueries" discusses the subquery. A subquery is a query that can be nested in another query.

Chapter 7, "Compound Queries" talks about set operators for combining the outputs of multiple queries.

Chapter 8, "Views" discusses views, which are predefined queries that you create and store in a database.

Chapter 9, “Built-in Functions” discusses some of the most commonly used built-in functions in the Oracle database.

Chapter 10, “PL/SQL” introduces Oracle’s PL/SQL programming language. PL/SQL extends SQL.

Chapter 11, “The Data Dictionary” shows how to use the data dictionary, the metadata of a database, to find information about the database.

Appendix A, “Installing Oracle Database XE” is a guide to installing Oracle Database Express Edition and making preparations for trying out the book examples.

Appendix B, “Oracle Built-in Data Types” provides a list of Oracle built-in data types.

Finally, Appendix C, “Indexing” covers the various indexing techniques available in the Oracle database.

Coding Convention SQL is not case sensitive. In this book, however, SQL reserved words such as CREATE and SELECT and keywords such as COUNT and MAX are written in upper case. To find the complete SQL reserved words, please refer to the Oracle SQL manuals. Non-reserved words, such as table and column names, are written in lower case.

In the book examples a single space is used between words or expressions. Extra spaces are allowed and have no effect.

Code Download

The examples accompanying this book can be downloaded from this site:

<http://books.brainysoftware.com/download>

Chapter 1

Storing and Maintaining Data

Data in a relational database (such as the Oracle database) is stored in tables. A very simple sales database, for example, might have four tables that store data on products, customers, suppliers, and customer orders.

When you add a record of data into a table, the record is stored as a row of the table. A record has fields. A product record, for example, might have four fields: product code, name, price, and launch date. All records you store in the product table must have the same fields. Each of the fields is a column of the table.

This chapter shows you how to use SQL statements to store and maintain data. The main objective of this chapter is to give you a taste of working with SQL.

To test the book examples you need a working Oracle database. Appendix A, “Installing Oracle Database XE” shows how you can install Oracle Database Express Edition (XE) and make it ready for use with the examples. This appendix also shows you how to use SQL*Plus to execute your SQL statements. If you do not have a working Oracle database, you should read this appendix first.

Selecting A Database to Use

You need a database to store your data. When you install Oracle Database XE, a database named “XE” is created as part of the installation. To use this database, run SQL*Plus and issue a CONNECT command as described in Appendix A, “Installing Oracle Database XE.”

Creating a Table

Before you can store data in a database, you must first create a table for your data. You do this by using the SQL CREATE TABLE statement. Tables that you create will reside in the database that you are currently connected to, which in this case is the XE database.

The syntax for the CREATE TABLE statement is as follows.

```
CREATE TABLE table
  (column_1 data_type_1,
   column_2 data_type_2,
   ...
   PRIMARY KEY (columns)
  );
```

Listing 1.1 shows a CREATE TABLE statement for creating a product table with four columns.

Listing 1.1: Creating a product table with four columns

```
CREATE TABLE product
(
  p_code    VARCHAR2(6),
  p_name    VARCHAR2(15),
  price     NUMBER(4,2),
  launch_dt DATE,
  PRIMARY KEY (p_code)
);
```

The four columns have three different data types. They are as follows.

- VARCHAR2(*n*) – variable length string up to *n* characters.
- NUMBER(*p*, *s*) – numeric with precision *p* and scale *s*. The price column, whose type is NUMBER(4,2), can store numbers between -99.99 and +99.99.
- DATE – date

Note

Appendix B, “Oracle Built-in Data Types” provides a complete list of Oracle data types.

When creating a table, you should always add a primary key, even though a primary key is optional. A primary key is a column or a set of columns that uniquely identify every row in the table. In the CREATE TABLE statement in Listing 1.1, the `p_code` field will be made the primary key for the product table.

Also note that an SQL statement must be terminated with a semicolon (;)

Adding Data

Once you have a table, you can add data to it using the INSERT statement. The syntax for the INSERT statement is as follows

```
INSERT INTO table
    (column_1,
     column_2,
     ... )
VALUES (value_1,
        value_2,
        ... )
;
```

For example, Listing 1.2 shows an SQL statement that inserts a row into the product table.

Listing 1.2: Inserting a row into the product table

```
INSERT INTO product
    ( p_code, p_name, price, launch_dt)
VALUES ( 1, 'Nail', 10.0, '31-MAR-2013');
```

After you execute the statement in Listing 1.2, your product table will have one row. You can query your table using this statement.

```
SELECT * FROM product;
```

The query result will be as follows.

P_CODE	P_NAME	PRICE	LAUNCH_DT
1	Nail	10.00	31-MAR-13

You can only add one row in an INSERT statement. The five INSERT statements in Listing 1.3 add five more rows to the product table.

Listing 1.3: Adding five more rows to the product table

```
INSERT INTO product ( p_code, p_name, price, launch_dt)
VALUES (2, 'Washer', 15.00, '29-MAR-13');
INSERT INTO product ( p_code, p_name, price, launch_dt)
VALUES (3, 'Nut', 15.00, '29-MAR-13');
INSERT INTO product ( p_code, p_name, price, launch_dt)
VALUES (4, 'Screw', 25.00, '30-MAR-13');
INSERT INTO product (p_code, p_name, price, launch_dt)
VALUES (5, 'Super_Nut', 30.00, '30-MAR-13');
INSERT INTO product (p_code, p_name, price, launch_dt)
VALUES (6, 'New Nut', NULL, NULL);
```

After executing the statements in Listing 1.3, your product table will contain these rows.

P_CODE	P_NAME	PRICE	LAUNCH_DT
1	Nail	10.00	31-MAR-13
2	Washer	15.00	29-MAR-13
3	Nut	15.00	29-MAR-13
4	Screw	25.00	30-MAR-13
5	Super_Nut	30.00	30-MAR-13
6	New Nut	NULL	NULL

Now issue a COMMIT command to persist (confirm the storage of) the additional five rows.

```
COMMIT;
```

Updating Data

You use the UPDATE statement to update one or more columns of existing data. You can update all rows in a table or certain rows in the table.

The syntax for the UPDATE statement is as follows

```
UPDATE table_name
SET column_1 = new_value_1 [,
    column_2 = new_value_2,
    ... ]
[WHERE condition];
```

You specify which rows to update in the WHERE clause. Without a WHERE clause, all rows will be updated. With a WHERE clause, only rows that meet the condition will be updated. If no row meets the condition in the WHERE clause, nothing will be updated.

As an example, the SQL statement in Listing 1.4 will cut the price by 5%. As the UPDATE statement does not have a WHERE clause, the prices of all the products will be updated.

Listing 1.4: Updating the price column

```
UPDATE product
SET price = price - (price * 0.05);
```

If you query the product table using this statement, you will learn that the values in the price column have changed.

```
SELECT * FROM product;
```

Here is the result of the query.

P_CODE	P_NAME	PRICE	LAUNCH_DT
1	Nail	9.50	31-MAR-13
2	Washer	14.25	29-MAR-13
3	Nut	14.25	29-MAR-13
4	Screw	23.75	30-MAR-13
5	Super_Nut	28.50	30-MAR-13

```
6          New Nut      NULL    NULL
```

Now, issue a **ROLLBACK** command to return the data values back to before the update:

```
ROLLBACK;
```

As another example, the statement in Listing 1.5 will update the price of product with `p_code = 9`, but the product table does not have such a `p_code`. Therefore, no row will be updated.

Listing 1.5: Updating the price column with a WHERE clause

```
UPDATE product
SET price = price - (price * 0.05)
WHERE p_code = 9;
```

Deleting Data

To delete a row or multiple rows in a table, use the **DELETE** statement. You can specify which rows to be deleted by using the **WHERE** clause.

The syntax for the **DELETE** statement is as follows

```
DELETE FROM table
[WHERE condition];
```

You specify which rows to delete in the **WHERE** clause.

For example, the statement in Listing 1.6 deletes from the product table all rows whose `p_name` field value is 'Nut'.

Listing 1.6: Deleting rows

```
DELETE FROM product
WHERE p_name = 'Nut';
```

After you run the statement in Listing 1. 6, please issue a **ROLLBACK** command to return the data values back to before the deletion:

```
ROLLBACK;
```

If none of the rows meets the condition, nothing will be deleted. Without the WHERE condition, all rows will be deleted and the product table will be empty.

As another example, the SQL statement in Listing 1.7 deletes all the rows in the product table.

Listing 1.7: Deleting all rows

```
DELETE FROM product;
```

Note that you cannot delete some of the columns in a row; the DELETE statement deletes the whole row. If you need to change the content of a specific column, use the UPDATE statement. For instance, the statement in Listing 1.8 changes the content of the price column to NULL. NULL is the absence of a value; it is neither 0 (zero) or empty. Chapter 2, “Basic Queries” has a section (“Handling NULL”) that explains NULL in detail.

Listing 1.8: Updating to NULL

```
UPDATE product SET price = NULL WHERE p_name = 'Nut';
```

When you query the Nut product, the result will show NULL on the price column.

```
SELECT * FROM product WHERE p_name = 'Nut';
```

The output is as follows.

P_CODE	P_NAME	PRICE	LAUNCH_DT
1	Nut	NULL	13-DEC-01

Please issue a ROLLBACK command to return the data values back to before the update:

```
ROLLBACK;
```

NULL display

In SQL* Plus, the default display of NULL is blank. Throughout this book, NULL is displayed as NULL. You can change the setting by executing the **SET null NULL** command in your SQL*Plus console.

Summary

In this chapter you got the first taste of working with SQL. You learned how to create a table and store data. In Chapter 2, “Basic Queries” you will learn to use the `SELECT` statement to query data.

Chapter 2

Basic Queries

A query is a request for data from one or more tables. When you execute a query, rows that satisfy the condition of the query will be returned as a table. Similarly, when a query embedded in another query or a program gets executed, the data returned to the other query or the program is a table.

In this chapter you learn how to write basic queries using the SELECT statement. Once you master the basic queries, you can start learning about queries within other queries in Chapter 6, “Subqueries” and within PL/SQL programs in Chapter 10, “PL/SQL.”

The SELECT statement

All queries regardless of their complexity use the SELECT statement. The SELECT statement has the following general syntax.

```
SELECT column_names FROM table_name [WHERE condition];
```

Only the SELECT and FROM clauses are mandatory. If your query does not have a WHERE clause, the result will include all rows in the table. If your query has a WHERE clause then only the rows satisfying the WHERE condition will be returned.

Querying All Data

The simplest query, which reads all data (all rows and all columns) from a table, has the following syntax.

```
SELECT * FROM table;
```

The asterisk (*) means all columns in the table. For instance, Listing 2.1 shows an SQL statement that queries all data from the product table.

Listing 2.1: Querying all product data

```
SELECT * FROM product;
```

Executing the query will give you the following result.

P_CODE	P_NAME	PRICE	LAUNCH_DT
-----	-----	-----	-----
1	Nail	10.00	31-MAR-13
2	Washer	15.00	29-MAR-13
3	Nut	15.00	29-MAR-13
4	Screw	25.00	30-MAR-13
5	Super_Nut	30.00	30-MAR-13
6	New Nut	NULL	NULL

Selecting Specific Columns

To query specific columns, list the columns in the SELECT clause. You write the columns in the order you want to see them in the output table. For example, the SELECT statement in Listing 2.2 queries the p_name and the price columns from the product table.

Listing 2.2: Querying specific columns

```
SELECT p_name, price FROM product;
```

All rows containing p_name and price columns will be returned by the query. Here is the query output.

P_NAME	PRICE
-----	-----
Nail	10.00
Washer	15.00
Nut	15.00
Screw	25.00
Super_Nut	30.00

New Nut NULL

Selecting Rows with WHERE

To query specific rows, use the WHERE clause. Recall that the SQL SELECT statement has the following syntax.

```
SELECT column_names FROM table_name [WHERE condition];
```

For example, the SQL statement in Listing 2.3 queries the p_name and price data from the product table with price = 15.

Listing 2.3: Querying specific rows

```
SELECT p_name, price FROM product WHERE price = 15;
```

Only rows whose price is 15 will be returned by the query, in this case the Washer and Nut. The query output is as follows.

P_NAME	PRICE
Washer	15.00
Nut	15.00

The equal sign (=) in the WHERE condition in Listing 2.3 is one of the comparison operators. Table 2.1 shows all comparison operators.

Operator	Description
=	Equal to
<	Less than
>	Greater than
<=	Less than or equal to
>=	Greater than or equal to
!=	Not equal to

Table 2.1: Comparison operators

As another example, Listing 2.4 shows a WHERE clause that uses the not equal to (!=) operator.

Listing 2.4: Using the != comparison operator

```
SELECT p_name, price FROM product WHERE p_name != 'Nut';
```

Only rows whose p_name is not Nut will be returned by the query. In this case, the query output will be as follows.

P_NAME	PRICE
Nail	10.00
Washer	15.00
Screw	25.00
Super_Nut	30.00
New Nut	NULL

Compound Conditions

The condition p_name != 'Nut' in Listing 2.4 is called a predicate. Using the AND and OR logical operator you can combine predicates to form a compound condition. Only rows that satisfy the compound condition will be returned by the query.

The rules for the OR logical operator are given in Table 2.2.

Left condition	Logical operator	Right condition	Compound condition
True	OR	True	True
True	OR	False	True
False	OR	True	True
False	OR	False	False

Table 2.2: The OR rules

In principle, the result of the OR compound condition is true (satisfying the condition) if any one of the two conditions being OR-ed is true; otherwise, if none of the conditions is true, the compound condition is false (not satisfying the condition).

The rules for the AND logical operator are presented in Table 2.3.

Left condition	Logical operator	Right condition	Compound condition
True	AND	True	True
True	AND	False	FALSE
False	AND	True	FALSE
False	AND	False	FALSE

Table 2.3: The AND rules

Basically, the result of the AND compound condition is true only if the two conditions being AND-ed are true; otherwise, the result is false.

For example, the statement in Listing 2.5 contains three predicates in its WHERE clause.

Listing 2.5: A query with three predicates

```
SELECT *
FROM product
WHERE (launch_dt >= '30-MAR-13'
OR price > 15)
AND (p_name != 'Nail');
```

The result of the first compound condition (`launch_dt >= '30-MAR-13'` OR `price > 15`) is true for Nail, Screw and Super_Nut rows in the product table; AND-ing this result with the (`p_name != 'Nail'`) predicate results in two products, the Screw and Super_Nut.

Here is the output of the query in Listing 2.5:

```
P_CODE P_NAME      PRICE LAUNCH_DT
-----
4      Screw      25.00 30-MAR-13
5      Super_Nut    30.00 30-MAR-13
```

Note that New Nut does not satisfy the condition because applying any of the comparison operators to NULL results in false (the price and launch_dt of the New Nut are NULL). The section “Handling NULL” later in this chapter explains more about NULL.

Evaluation Precedence and the Use of Parentheses

If a compound condition contains both the OR condition and the AND condition, the AND condition will be evaluated first because AND has a higher precedence than OR. However, anything in parentheses will have an even higher precedence than AND. For example, the SELECT statement in Listing 2.5 has an OR and an AND, but the OR condition is in parentheses so the OR condition is evaluated first. If you remove the parentheses in the SELECT statement in Listing 2.5, the query will return a different result. Consider the statement in Listing 2.6, which is similar to that in Listing 2.5 except that the parentheses have been removed.

Listing 2.6: Evaluation precedence

```
SELECT *
FROM product
WHERE launch_dt >= '30-MAR-13'
OR price          > 15
AND p_name       != 'Nail';
```

For your reading convenience, the product table is reprinted here.

P_CODE	P_NAME	PRICE	LAUNCH_DT
1	Nail	10.00	31-MAR-13
2	Washer	15.00	29-MAR-13
3	Nut	15.00	29-MAR-13
4	Screw	25.00	30-MAR-13
5	Super_Nut	30.00	30-MAR-13
6	New Nut	NULL	NULL

Without the parentheses, the compound condition `price > 15 AND p_name != 'Nail'` will be evaluated first, resulting in the Screw and Super_Nut. The result is then OR-ed with the `launch_dt >= 30-MAR-13'` condition, resulting in these three rows.

P_CODE	P_NAME	PRICE	LAUNCH_DT
1	Nail	10.00	31-MAR-13

4	Screw	25.00	30-MAR-13
5	Super_Nut	30.00	30-MAR-13

The NOT logical operator

You can use NOT to negate a condition and return rows that do not satisfy the condition. Consider the query in Listing 2.7.

Listing 2.7: Using the NOT operator

```
SELECT *
FROM product
WHERE NOT (launch_dt >= '30-MAR-13'
OR price > 15
AND p_name != 'Nail' );
```

Thanks to the NOT operator in the query in Listing 2.7, the two rows not satisfying the condition in Listing 2.6 will now be returned.

P_CODE	P_NAME	PRICE	LAUNCH_DT
2	Washer	15.00	29-MAR-13
3	Nut	15.00	29-MAR-13

As another example, the query in Listing 2.8 negates the last predicate only (as opposed to the previous query that negated the overall WHERE condition).

Listing 2.8: Using NOT on one predicate

```
SELECT *
FROM product
WHERE (launch_dt >= '30-MAR-13'
OR price > 15)
AND NOT (p_name != 'Nail');
```

The output of the query in Listing 2.8 is as follows.

P_CODE	P_NAME	PRICE	LAUNCH_DT
1	Nail	10.00	31-MAR-13

The BETWEEN Operator

The BETWEEN operator evaluates equality to any value within a range. The range is specified by a boundary, which specifies the lowest and the highest values.

Here is the syntax for BETWEEN.

```
SELECT columns FROM table
WHERE column BETWEEN(lowest_value, highest_value);
```

The boundary values are inclusive, meaning *lowest_value* and *highest_value* will be included in the equality evaluation.

For example, the query in Listing 2.9 uses the BETWEEN operator to specify the lowest and highest prices that need to be returned from the product table.

Listing 2.9: Using the BETWEEN operator

```
SELECT * FROM product WHERE price BETWEEN 15 AND 25;
```

Here is the output of the query in Listing 2.9.

P_CODE	P_NAME	PRICE	LAUNCH_DT
2	Washer	15.00	29-MAR-13
3	Nut	15.00	29-MAR-13
4	Screw	25.00	30-MAR-13

The IN Operator

The IN operator compares a column with a list of values. The syntax for a query that uses IN is as follows.

```
SELECT columns FROM table
WHERE column IN(value1, value2, ...);
```

For example, the query in Listing 2.10 uses the IN operator to select all columns whose price is in the list (10, 25, 50).

Listing 2.10: Using the IN operator

```
SELECT * FROM product WHERE price IN (10, 25, 50);
```

The output of the query in Listing 2.10 is as follows.

P_CODE	P_NAME	PRICE	LAUNCH_DT
1	Nail	10.00	31-MAR-13
4	Screw	25.00	30-MAR-13

The LIKE Operator

The LIKE operator allows you to specify an imprecise equality condition. The syntax is as follows.

```
SELECT columns FROM table
WHERE column LIKE ' ... wildcard_character ... ';
```

The wildcard character can be a percentage sign (%) to represent any number of characters or an underscore (_) to represent a single occurrence of any character.

As an example, the query in Listing 2.11 uses the LIKE operator to find products whose name starts with N and is followed by two other characters plus products whose name starts with Sc and can be of any length.

Listing 2.11: Using the LIKE operator

```
SELECT * FROM product WHERE p_name LIKE 'N__' OR p_name LIKE 'Sc%';
```

The output of the query in Listing 2.11 is this.

P_CODE	P_NAME	PRICE	LAUNCH_DT
3	Nut	15.00	29-MAR-13
4	Screw	25.00	30-MAR-13

Even though you can use LIKE for numeric columns, it is primarily used with columns of type string.

Escaping the Wildcard Character

If the string you specify in the LIKE operator contains an underscore or a percentage sign, SQL will regard it as a wild character. For example, if you want to query products that have an underscore in their names, your SQL statement would look like that in Listing 2.12.

Listing 2.12: A wildcard character _ in the LIKE string

```
SELECT * FROM product WHERE p_name LIKE '%_%';
```

If you execute the query in Listing 2.12, the query will return all rows instead of just the Super_Nut, because the underscore in the LIKE operator is regarded as a wild card character, i.e. any one character. Listing 2.13 resolves this problem by prefixing the wild card character with an ESCAPE character. In the statement the ESCAPE clause defines \ (backslash) as an escape character, meaning any character in the LIKE operator after a backslash will be considered a character, not as a wildcard character. Now only rows whose p_name contains an underscore will be returned.

Listing 2.13: Escaping the wildcard character _

```
SELECT * FROM product WHERE p_name LIKE '%\_%' ESCAPE '\\';
```

The query in Listing 2.13 will produce the following output.

P_CODE	P_NAME	PRICE	LAUNCH_DT
-----	-----	-----	-----
5	Super_Nut	30.00	30-MAR-13

Combining the NOT operator

You can combine NOT with BETWEEN, IN, or LIKE to negate their conditions. For example, the query in Listing 2.14 uses NOT with BETWEEN.

Listing 2.14: Using NOT with BETWEEN

```
SELECT * FROM product WHERE price NOT BETWEEN 15 AND 25;
```

Executing the query in Listing 2.14 will give you this result.

P_CODE	P_NAME	PRICE	LAUNCH_DT
1	Nail	10.00	31-MAR-13
5	Super_Nut	30.00	30-MAR-13

Handling NULLNULL, an SQL reserved word, represents the absence of data. NULL is applicable to any data type. It is not the same as a numeric zero or an empty string or a 0000/00/00 date. You can specify whether or not a column can be null in the CREATE TABLE statement for creating the table.

The result of applying any of the comparison operators on NULL is always NULL. You can only test whether or not a column is NULL by using the IS NULL or IS NOT NULL operator.

Consider the query in Listing 2.15.

Listing 2.15: Invalid usage of the equal operator on NULL

```
SELECT * FROM product WHERE price = NULL;
```

Executing the query in Listing 2.15 produces no output. In fact, you will get the following message.

```
no rows selected
```

As another example, consider the query in Listing 2.16 that uses IS NULL.

Listing 2.16: Using IS NULL

```
SELECT * FROM product WHERE price IS NULL;
```

The query output is as follows.

P_NO	P_NAME	PRICE	LAUNCH_DT
6	New Nut	NULL	NULL

Note

Chapter 6, “Built-in Functions,” discusses functions that you can use to test column nullity.

Summary

In this chapter you learned the basics queries using the SELECT statement. In the next chapter you will learn how to format query outputs.

Chapter 3

Query Output

All the queries in Chapter 2, “Basic Queries” returned rows that contained columns from the source table. However, output rows can also contain string or numeric expressions that include string or numeric literals, operators, and functions.

In this chapter you learn how to manipulate query output using expressions and how to order and store output rows into a table.

Column Aliases

By default the names of the output columns in the query output are the names of the columns of the queried table. However, you don’t have to be stuck with the original column names. You can give them different names or aliases if you wish.

The syntax for the SELECT clause that uses aliases is as follows.

```
SELECT column_1 AS alias1, column_2 AS alias2, ...  
FROM table;
```

An alias can consist of one or multiple words. You must enclose a multiword alias with quotes, e.g. “PRODUCT NAME”. For example, the query in Listing 3.1 uses an alias for the `p_name` column.

Listing 3.1: Using an alias in a query

```
SELECT p_code,  
       p_name AS "PRODUCT NAME"  
FROM product;
```

Expressions

An output column can also be an expression. An expression in the SELECT clause can include columns, literal values, arithmetic or string operators, and functions. For instance, the SELECT clause in the query in Listing 3.2 employs several expressions.

Listing 3.2: Various types of output columns

```
SELECT p_code,
       'p_name in Uppercase: '
       || UPPER(p_name)           AS "PRODUCT NAME",
       (price * 100)              AS "NORMALIZED_PRICE",
       TO_CHAR(launch_dt, 'DD/MM/YYYY') AS "LAUNCH_DATE"
FROM product;
```

The output of the query in Listing 3.2 will have four columns.

The first output column, `p_code`, is a column from the product table.

The second output column (aliased "PRODUCT NAME") is an expression that contains three parts, a literal 'p_name in Uppercase: ', a concatenation string operator (||), and UPPER(p_name). The latter, UPPER, is a function applied to the p_name column from the product table. The UPPER function changes the case of the product names to uppercase.

The third output column ("NORMALIZED_PRICE") is an arithmetic expression (price*100).

The last output column ("LAUNCH_DATE") is the launch_date column formatted as DD/MM/YYYY.

Applied against the following product table

P_CODE	P_NAME	PRICE	LAUNCH_DT
1	Nail	10.00	31-MAR-13
2	Washer	15.00	29-MAR-13
3	Nut	15.00	29-MAR-13
4	Screw	25.00	30-MAR-13

```

5      Super_Nut      30.00 30-MAR-13
6      New Nut        NULL  NULL

```

the query in Listing 3.2 returns the following rows.

P_CODE	PRODUCT NAME	NORMALIZED_PRICE	LAUNCH_DATE
1	p_name in Uppercase: NAIL	1000	31/03/2013
2	p_name in Uppercase: WASHER	1500	29/03/2013
3	p_name in Uppercase: NUT	1500	29/03/2013
4	p_name in Uppercase: SCREW	2500	30/03/2013
5	p_name in Uppercase: SUPER_NUT	3000	30/03/2013
6	p_name in Uppercase: NEW NUT	NULL	NULL

You can use other arithmetic operators in addition to the multiplication (*) operator in your column. These include addition (+), subtraction (-), and division (/)

Note

Chapter 9, “Built-in Functions” explains functions in more detail.

Limiting the Number of Rows

You can limit the number of output row by using the ROWNUM pseudo column. Its syntax is as follows.

```

SELECT columns FROM table(s)
WHERE conditions AND ROWNUM < count;

```

The maximum number of output rows of a query that employs ROWNUM will be *count* – 1.

As an example, take a look at the query in Listing 3.3.

Listing 3.3: Using ROWNUM

```

SELECT * FROM product WHERE price > 10 AND ROWNUM < 4;

```

Without the expression ROWNUM < 4, the number of output rows would be 4. The query in Listing 3.3, however, returns these three rows.

P_CODE	P_NAME	PRICE	LAUNCH_DT
2	Washer	15.00	29-MAR-13
3	Nut	15.00	29-MAR-13
4	Screw	25.00	30-MAR-13

The DISTINCT Keyword

A query may return duplicate rows. Two rows are duplicates if each of their columns contains exactly the same data. If you don't want to see duplicate output rows, use **DISTINCT** in your **SELECT** clause. You can use **DISTINCT** on one column or multiple columns.

Using DISTINCT on A Single Column

The query in Listing 3.4 uses **DISTINCT** on the price column.

Listing 3.4: Using DISTINCT on a single column

```
SELECT DISTINCT price FROM product ORDER BY price;
```

Without **DISTINCT**, the query in Listing 3.4 will return six rows that include two duplicate prices for row 2 and row 3. Instead, the query in Listing 3.4 returns the following output.

```
PRICE
-----
10
15
25
30
NULL
```

Using DISTINCT on Multiple Columns

If a query returns multiple columns, two rows are considered duplicates if all their columns have the same values. They are not duplicates if only one column has the same value.

The DISTINCT keyword can be applied on multiple columns too. For example, the query in Listing 3.5 uses DISTINCT on multiple columns.

Listing 3.5: Using DISTINCT on multiple columns

```
SELECT DISTINCT price, launch_dt FROM product ORDER BY price;
```

Here is the output. Note that output rows with the same price and launch_dt will only be shown once.

```
PRICE LAUNCH_DT
-----
10 31-MAR-13
15 29-MAR-13
25 30-MAR-13
30 30-MAR-13
NULL NULL
```

Aggregate Functions

You can manipulate your query output further by using aggregate functions. The aggregate functions are listed in Table 3.1.

Function	Description
MAX(column)	The maximum column value
MIN(column)	The minimum column value
SUM(column)	The sum of column values
AVG(column)	The average column value
COUNT(column)	The count of rows
COUNT(*)	The count of all rows including NULL.

Table 3.1: Built-in aggregate functions

As an example, the query in Listing 3.6 uses the aggregate functions in Table 3.1.

Listing 3.6: Using aggregate functions

```
SELECT MAX(price),
       MIN(price),
       SUM(price),
       AVG(price),
       COUNT(price),
       COUNT(*)
FROM product;
```

Note that only COUNT(*) takes into account the New Nut product because its price is NULL.

The output of the query in Listing 3.6 is this.

MAX(PRICE)	MIN(PRICE)	SUM(PRICE)	AVG(PRICE)	COUNT(PRICE)	COUNT(*)
30	10	95	19	5	6

The CASE expressionCASE allows you to have dynamic query output in which a column value may vary depending on the value of the column. CASE comes in two flavors: Simple and Searched. Both will be explained in the following subsections.

The Simple CASE

The general syntax for the Simple CASE is as follows.

```
SELECT columns,
       CASE column
         WHEN equal_value1
           THEN output_value1
         WHEN equal_value2
           THEN output_value2
         WHEN ...
           [ELSE else_value]
       END AS output_column
FROM table
WHERE ... ;
```

In the Simple CASE, *column_name* is compared to *equal_values* in the WHEN clause, starting from the first WHEN and down to the last WHEN. If *column_name* matches a WHEN value, the value right after the THEN clause is returned and the CASE process stops. If *column_name* matches none of the WHEN values, *else_value* is returned if there exists an ELSE clause. If *column_name* matches none of the WHEN values but no ELSE clause exists, NULL will be returned.

As an example, the query in Listing 3.7 uses a Simple CASE expression for the price column to produce a price_cat (price category) output column.

Listing 3.7: An example of the Simple CASE

```
SELECT p_code,
       p_name,
       CASE price
         WHEN 10
           THEN 'Cheap'
         WHEN 15
           THEN 'Medium'
         WHEN 25
           THEN 'Expensive'
         ELSE 'Others'
       END AS price_cat
FROM product;
```

Assuming the product table has the following data

P_CODE	P_NAME	PRICE	LAUNCH_DT
1	Nail	10.00	31-MAR-13
2	Washer	15.00	29-MAR-13
3	Nut	15.00	29-MAR-13
4	Screw	25.00	30-MAR-13
5	Super_Nut	30.00	30-MAR-13
6	New Nut	NULL	NULL

the query will return these rows.

P_CODE	P_NAME	PRICE_CAT
1	Nail	Cheap
2	Washer	Medium

3	Nut	Medium
4	Screw	Expensive
6	New Nut	Others
5	Super_Nut	Others

The Searched CASE

The case in the Simple CASE compares a column with various values. On the hand, the case in the Searched CASE can be any condition. Here is the syntax for the Searched CASE.

```
SELECT columns,
CASE
  WHEN condition1
  THEN output_value1
  WHEN condition2
  THEN output_value2
  WHEN ...
  ELSE else_value
END AS output_column
FROM table
WHERE ... ;
```

The conditions are evaluated starting from the first WHEN and down to the last WHEN. If a WHEN condition is met, its THEN output_value is returned to the output_column and the CASE process stops. If none of the WHEN conditions is met, *else_value* is returned if there exists an ELSE clause. If no condition is met and no ELSE clause exists, NULL will be returned.

For instance, the query in Listing 3.8 uses a Searched CASE. While the Simple CASE in Listing 3.7 categorized the products based on only their prices, this Searched CASE categorizes the products based on the various conditions which can involve more than just the price. Note that in the Search CASE, NULL equality can be a condition, something that is not allowed in the Simple CASE.

Listing 3.8: An example of the Searched CASE

```
SELECT p_code,
       p_name,
```

```

CASE
  WHEN (price <= 10
        AND p_name NOT LIKE 'Nut%')
  THEN 'Cheap'
  WHEN price BETWEEN 11 AND 25
  THEN 'Medium'
  WHEN price > 25 and TO_CHAR(launch_dt, 'YYYYMMDD') > '20130329'
  THEN 'Expensive'
  WHEN price IS NULL
  THEN 'Not valid'
  ELSE 'Others'
END AS product_cat
FROM product;

```

Applying the query against the following product table

P_CODE	P_NAME	PRICE	LAUNCH_DT
1	Nail	10.00	31-MAR-13
2	Washer	15.00	29-MAR-13
3	Nut	15.00	29-MAR-13
4	Screw	25.00	30-MAR-13
5	Super_Nut	30.00	30-MAR-13
6	New Nut	NULL	NULL

will return the following rows.

P_CODE	P_NAME	PRODUCT_CAT
1	Nail	Cheap
2	Washer	Medium
3	Nut	Medium
4	Screw	Medium
5	Super_Nut	Expensive
6	New Nut	Not valid

Ordering Output Rows

To provide better visualization of the output, you can order output rows based on certain criteria. To order the output, use the `ORDER BY` clause. The `ORDER BY` clause must appear last in a `SELECT` statement.

Here is the syntax for a query having the ORDER BY clause.

```
SELECT columns FROM
table
WHERE condition ORDER BY column(s)
```

You can order output rows in one of the following methods.

- by one or more columns
- in ascending or descending direction
- by using the GROUP BY clause
- by using UNION and other set operators

Each of the methods is explained in the subsections below.

Ordering by One Column

To order your query output rows, use the ORDER BY clause with one column. For instance, have a look at the query in Listing 3.9.

Listing 3.9: Ordering by one column

```
SELECT * FROM product ORDER BY p_name;
```

When you apply the query against the following product table

P_CODE	P_NAME	PRICE	LAUNCH_DT
1	Nail	10.00	31-MAR-13
2	Washer	15.00	29-MAR-13
3	Nut	15.00	29-MAR-13
4	Screw	25.00	30-MAR-13
5	Super_Nut	30.00	30-MAR-13
6	New Nut	NULL	NULL

you will see the following output.

P_CODE	P_NAME	PRICE	LAUNCH_DT
1	Nail	10	31-MAR-13
6	New Nut	NULL	NULL
3	Nut	15	29-MAR-13

4	Screw	25	30-MAR-13
5	Super_Nut	30	30-MAR-13
2	Washer	15	29-MAR-13

Direction of Order

The default direction is ascending. To order a column in descending direction, use the DESC reserved word. For example, the query in Listing 3.10 is similar to that in Listing 3.9 except that the output is presented in descending order.

Listing 3.10: Changing the order direction

```
SELECT * FROM product ORDER BY p_name DESC;
```

The output rows will be returned with p_name sorted in descending order.

P_CODE	P_NAME	PRICE	LAUNCH_DT
2	Washer	15	29-MAR-13
5	Super_Nut	30	30-MAR-13
4	Screw	25	30-MAR-13
3	Nut	15	29-MAR-13
6	New Nut	NULL	NULL
1	Nail	10	31-MAR-13

Multiple Columns

To order by more than one column, list the columns in the ORDER BY clause. The sequence of columns listed is significant. The order will be conducted by the first column in the list, followed by the second column, and so on. For example, if the ORDER BY clause has two columns, the query output will first be ordered by the first column. Any rows with identical values in the first column will be further ordered by the second column.

For example, the query in Listing 3.11 uses an ORDER BY clause with two columns.

Listing 3.11: Multiple column ordering

```
SELECT * FROM product ORDER BY launch_dt, price;
```

Applying the query against the product table.

P_CODE	P_NAME	PRICE	LAUNCH_DT
1	Nail	10.00	31-MAR-13
2	Washer	15.00	29-MAR-13
3	Nut	15.00	29-MAR-13
4	Screw	25.00	30-MAR-13
5	Nut	30.00	30-MAR-13
6	Nut	NULL	NULL

The output rows will first be ordered by `launch_dt` and then by price, both in ascending order. The secondary ordering by price is seen on the Screw and Super_Nut rows. Their `launch_dt`'s are the same, 30-MAR-13. Their prices are different, Screw's lower than Super_Nut's, hence Screw row comes before the Super_Nut.

P_CODE	P_NAME	PRICE	LAUNCH_DT
3	Nut	15.00	29-MAR-13
2	Washer	15.00	29-MAR-13
4	Screw	25.00	30-MAR-13
5	Super_Nut	30.00	30-MAR-13
1	Nail	10.00	31-MAR-13
6	New Nut	NULL	NULL

Different Directions on Different Columns

You can apply different order directions on ordered columns too. For example, the query in Listing 3.12 uses different directions on different columns in its `ORDER BY` clause.

Listing 3.12: Using multiple directions of ORDER

```
SELECT * FROM product ORDER BY launch_dt, price DESC;
```

Applying the query against the product table, the output rows will be ordered by `launch_dt` in ascending order and then by price in descending order. Now, the `Super_Nut` comes before the `Screw`.

P_CODE	P_NAME	PRICE	LAUNCH_DT
-----	-----	-----	-----
3	Nut	15.00	29-MAR-13
2	Washer	15.00	29-MAR-13
5	Super_Nut	30.00	30-MAR-13
4	Screw	25.00	30-MAR-13
1	Nail	10.00	31-MAR-13
6	New Nut	NULL	NULL

Ordering with a WHERE clause

If your `SELECT` statement has both the `WHERE` clause and the `ORDER BY` clause, `ORDER BY` must appear after the `WHERE` clause.

For example, the query in Listing 3.13 has both `WHERE` and `ORDER BY`. This query will return only Nut products.

Listing 3.13: Using both WHERE and ORDER BY

```
SELECT * FROM product WHERE p_name = 'Nut'
ORDER BY p_name, p_code DESC;
```

If you execute the query, you will see one row only, the `Nut`, in the output window.

P_CODE	P_NAME	PRICE	LAUNCH_DT
-----	-----	-----	-----
3	Nut	15.00	29-MAR-13

Storing Query Output

You can store a query output into a new or existing table. To store a query output in a new table, use the following statement:

```
CREATE TABLE new_table AS SELECT ... ;
```

For instance, the query in Listing 3.14 executes a SELECT statement and stores its result in a new table called `nut_product`.

Listing 3.14: Storing output into a new table

```
CREATE TABLE nut_product AS
SELECT * FROM product WHERE p_name LIKE '%Nut%';
```

Applied against the product table, the query in Listing 3.14 will create a `nut_product` table with the following content.

P_CODE	P_NAME	PRICE	LAUNCH_DT
3	Nut	15	29-MAR-13
6	New Nut	NULL	NULL
5	Super_Nut	30	30-MAR-13

To store a query output into an existing table, use this syntax.

```
INSERT INTO existing_table AS SELECT ... ;
```

For example, the query in Listing 3.15 stores the query result in an existing table.

Listing 3.15: Storing output into an existing table

```
INSERT INTO non_nut
SELECT * FROM product WHERE p_name NOT LIKE '%Nut%';
```

Before executing INSERT statement of Listing 3.15, first you have to create a `non_nut` table by executing the following statement.

```
CREATE TABLE non_nut
(
    p_code    VARCHAR2(6),
    p_name    VARCHAR2(15),
    price     NUMBER(4,2),
    launch_dt DATE,
    PRIMARY KEY (p_code)
);
```

Applying the query in Listing 3.15 against this product table

P_CODE	P_NAME	PRICE	LAUNCH_DT
1	Nail	10	31-MAR-13
2	Washer	15	29-MAR-13
3	Nut	15	29-MAR-13
4	Screw	25	30-MAR-13
6	New Nut	NULL	NULL
5	Super_Nut	30	30-MAR-13

you will get a non_nut table with the following rows.

P_CODE	P_NAME	PRICE	LAUNCH_DT
1	Nail	10	31-MAR-13
2	Washer	15	29-MAR-13
4	Screw	25	30-MAR-13

Summary

SQL allows you to retrieve rows from a table and manipulate the output. You learned in this chapter that you can create aliases, use aggregate functions, and order rows.

Chapter 4

Grouping

A group is a set of rows having the same value on specific columns. In Chapter 3, “Query Output” you learned how to apply aggregate functions on all output rows. In this chapter you learn how to create groups and apply aggregate functions on those groups.

The GROUP BY Clause

In a query the GROUP BY clause appears after the WHERE clause and before the ORDER clause, if any. Here is the syntax for a SELECT statement with the WHERE, GROUP BY, and ORDER BY clauses.

```
SELECT columns,  
       aggregate_function(group_columns)  
FROM table(s)  
WHERE condition  
GROUP BY group_columns  
ORDER BY column(s);
```

As an example, the query in Listing 4.1 groups the output from the product table by their launch date.

Listing 4.1: Grouping on one column

```
SELECT launch_dt,  
       MAX(price) MAX,  
       MIN(price) MIN,  
       SUM(price) SUM,  
       AVG(price) AVG,  
       COUNT(price) COUNT,  
       COUNT(*) AS "COUNT(*)"
```

```

FROM product
GROUP BY launch_dt
ORDER BY launch_dt;

```

Applied against a product table with the following rows, aggregations will be done by the four grouped launch dates: 29, 30 and 31 of March 2013, and NULL.

P_CODE	P_NAME	PRICE	LAUNCH_DT
1	Nail	10.00	31-MAR-13
2	Washer	15.00	29-MAR-13
3	Nut	15.00	29-MAR-13
4	Screw	25.00	30-MAR-13
5	Super_Nut	30.00	30-MAR-13
6	New Nut	NULL	NULL

The query output will have four rows, one for each of the four grouped launch dates. Note that the COUNT(price) element, which counts the rows with a value on their price column, produces 0. On the other hand, the COUNT(*) element, which counts the NULL launch dates, produces 1.

LAUNCH_DT	MAX	MIN	SUM	AVG	COUNT	COUNT(*)
29-MAR-13	15	15	30	15	2	2
30-MAR-13	30	25	55	27.5	2	2
31-MAR-13	10	10	10	10	1	1
NULL	NULL	NULL	NULL	NULL	0	1

You can group by more than one column. If you do that, rows having the same value on all the columns will form a group. As an example, the query in Listing 4.2 groups rows by price and launch date.

Listing 4.2: Grouping on two columns

```

SELECT price,
       launch_dt,
       MAX(price) MAX,
       MIN(price) MIN,
       SUM(price) SUM,
       AVG(price) AVG,
       COUNT(price) COUNT,
       COUNT(*) "COUNT(*) "

```

```

FROM product
GROUP BY price,
       launch_dt
ORDER BY price,
       launch_dt;

```

Applied to the same product table, the output will have five rows. Even though the Screw and Super_Nut have the same price, they have different launch dates, and therefore form different groups.

PRICE	LAUNCH_DT	MAX	MIN	SUM	AVG	COUNT	COUNT(*)
10	31-MAR-13	10	10	10	10	1	1
15	29-MAR-13	15	15	30	15	2	2
25	30-MAR-13	25	25	25	25	1	1
30	30-MAR-13	30	30	30	30	1	1
NULL	NULL	NULL	NULL	NULL	NULL	0	1

The HAVING Keyword

The WHERE condition can be used to select individual rows. On the other hand, the HAVING condition is used for selecting individual groups. Only groups that satisfy the condition in the HAVING clause will be returned by the query. In other words, the HAVING condition is on the aggregate, not on a column.

If present, the HAVING clause must appear after the GROUP BY, as in the following syntax.

```

SELECT columns,
       aggregate_function(group_columns)
FROM table(s)
WHERE condition
GROUP BY group_columns
HAVING aggregate_condition
ORDER BY columns;

```

As an example, the query in Listing 4.3 uses the HAVING condition.

Listing 4.3: Using the HAVING condition

```
SELECT price,
       launch_dt,
       MAX(price) MAX,
       MIN(price) MIN,
       SUM(price) SUM,
       AVG(price) AVG,
       COUNT(price) COUNT,
       COUNT(*) "COUNT(*)"
FROM product
GROUP BY price,
       launch_dt
HAVING COUNT(price) > 1
ORDER BY price,
       launch_dt;
```

Only groups having more than one row (satisfying the COUNT(price) > 1 condition) will be returned. Only one row will be returned, the one with price = 15 and launch date = 29-MAR-13.

PRICE	LAUNCH_DT	MAX	MIN	SUM	AVG	COUNT	COUNT(*)
15	29-MAR-13	15	15	30	15	2	2

If a WHERE clause is present, it must appear after the GROUP BY clause. Individual rows will be selected by the WHERE condition first before grouping occurs. For instance, the query in Listing 4.4 uses both WHERE and GROUP BY.

Listing 4.4: Grouping with WHERE

```
SELECT launch_dt,
       MAX(price) MAX,
       MIN(price) MIN,
       SUM(price) SUM,
       AVG(price) AVG,
       COUNT(price) COUNT,
       COUNT(*) "COUNT(*)"
FROM product
WHERE p_name NOT LIKE 'Super%'
GROUP BY launch_dt
HAVING launch_dt > '29-MAR-13'
```

```
ORDER BY launch_dt;
```

Here is the query output.

LAUNCH_DT	MAX	MIN	SUM	AVG	COUNT	COUNT(*)
30-MAR-13	25.0	25.0	25.0	25.0	1	1
31-MAR-13	10.0	10.0	10.0	10.0	1	1

In this case, Super_Nut does not satisfy the WHERE condition. As such, it is not included in the aggregation.

Applying aggregate as a WHERE condition clause is not allowed. This is shown in Listing 4.5, which contains a query that throws an error if executed.

Listing 4.5: Error with WHERE on the aggregate

```
SELECT price,
       launch_dt,
       MAX(price) MAX,
       MIN(price) MIN,
       SUM(price) SUM,
       AVG(price) AVG,
       COUNT(price) COUNT,
       COUNT(*) "COUNT(*)"
FROM product
WHERE COUNT(price) > 1;
```

Executing this query will give you this error message.

```
ORA-00934: group function is not allowed here
```

Summary

In this chapter you learned how to aggregate values from rows. You also learned to use the HAVING condition applied on aggregates. In the next chapter you will learn about the JOIN clause used to “aggregate” rows from more than one table.

Chapter 5

Joins

A real-world database typically stores data in dozens or even hundreds of tables. In these multi-table databases, a table often relates to one or some other tables. In this environment, you should be able to relate rows from two or more tables by using the JOIN clause. This chapter shows you how.

Primary Keys and Foreign Keys

In Chapter 1, “Storing and Maintaining Data” you learned about primary keys. A primary key is a column, or a set of columns, which uniquely identifies every row in a table. A foreign key is a column, or a set of columns, which is used to relate to the primary key of another table. The process of using the foreign key/primary key to relate rows from two tables is called joining.

While a primary key must be unique, a foreign key does not have to be unique. You can have a foreign key in more than one row. For example, in a customer order table you can have many orders for the same product. In this customer order table, a product is represented by its foreign key, e.g. product code, which is the primary key of the product table.

Even though the use of primary and foreign keys is not an absolute requirement for joining tables, their absence may cause you to incorrectly join tables.

Querying Multiple Tables

To query data from multiple tables, use the JOIN keyword to specify the related columns from two tables. The JOIN clause of a SELECT statement joins related rows from two or more tables, based on their primary key/foreign key relationship.

For example, a customer order (c_order) table may need a foreign key column to relate to the primary key of the product table. Additionally, the customer order table may also need a foreign key to relate to the primary key of the customer table.

The syntax for the JOIN is as follows.

```
SELECT columns FROM table_1, table_2, ... table_n
WHERE table_1.primary_key = table_2.foreign_key
AND table_2.primary_key = table_n.foregin_key;
```

To illustrate the use of joins, I will use the c_order table, customer table, and product table in Table 5.1, Table 5.2, and Table 5.3, respectively. The C_NO and P_CODE of the c_order table are foreign keys; their related primary keys are in the customer and product tables, respectively.

C_NO	P_CODE	QTY	ORDER_DT
10	1	100	01-APR-13
10	2	100	01-APR-13
20	1	200	01-APR-13
30	3	300	02-APR-13
40	4	400	02-APR-13
40	5	400	03-APR-13

Table 5.1: The customer order (c_order) table

C_NO	C_NAME
10	Standard Store
20	Quality Store
30	Head Office
40	Super Agent

Table 5.2: The customer table

P_CODE	P_NAME	PRICE	LAUNCH_DT
1	Nail	10.00	31-MAR-13
2	Washer	15.00	29-MAR-13
3	Nut	15.00	29-MAR-13
4	Screw	25.00	30-MAR-13
5	Super_Nut	30.00	30-MAR-13
6	New Nut	NULL	NULL

Table 5.3: The product table

Listing 5.1 is an example of a JOIN query. It joins the rows from the `c_order` table to the rows from the customer table based on the `c_no` foreign key column of the `c_order` table and the `c_no` primary key column of the customer table. The query returns the name of every customer who has placed one or more orders.

Listing 5.1: A two table join

```
SELECT c_name,
       p_code,
       c_order.qty,
       c_order.order_dt
FROM   c_order
JOIN   customer
ON     c_order.c_no = customer.c_no;
```

Applied against the example `c_order` and customer tables, the query result is as follows.

C_NAME	P_CO	QTY	ORDER_DT
Standard Store	2	100	01-APR-13
Standard Store	1	100	01-APR-13
Quality Store	1	200	01-APR-13
Head Office	3	300	02-APR-13
Super Agent	5	400	03-APR-13
Super Agent	4	400	02-APR-13

Using Table Aliases

In a join query, different tables can have columns with identical names. To make sure you refer to the correct column of a table, you need to qualify it with its table. In the previous example, `c_order.c_no` (the `c_no` column of the `c_order` table) and `customer.c_no` (the `c_no` column of the `customer_table`) were how the `c_no` columns were qualified. A table alias can be a more convenient (and shorter) way to qualify a column.

For example, in the query in Listing 5.2, `o` is an alias for the `c_order` table and `c` is an alias for the `customer` table. These aliases are then used in the `ON` clause to qualify the `c_no` columns with their respective tables.

Listing 5.2: Using table aliases

```
SELECT c_name,  
       p_code,  
       o.qty,  
       o.order_dt  
FROM c_order o  
JOIN customer c  
ON o.c_no = c.c_no;
```

Column Aliases vs. Table Aliases

In Chapter 3, “Query Output”, I explained the use of aliases for columns using the `AS` keyword. Although a column alias can be created without using the `AS` keyword, its presence improves readability (“`p_name AS product_name`” instead of “`p_name product_name`”). On the other hand, table aliases cannot use the `AS` keyword.

Joining More than Two Tables

From the `JOIN` syntax presented earlier, you can join more than two tables. To do this, in the `SELECT` statement, join two tables at a time.

For example, the query in Listing 5.3 joins the `c_order` table to the `customer` table, and then joins the `customer` table to the `product` table. The

rows in the `c_order` table are joined to the rows of the same `c_no` column from the customer table, and these rows are then joined to the rows with the same `p_code` from the product table. This query returns the customer names and their orders.

Listing 5.3: A three table join

```
SELECT c_name,
       p_name,
       o.qty,
       o.order_dt
FROM   c_order o
JOIN   customer c
ON     o.c_no = c.c_no
JOIN   product p
ON     o.p_code = p.p_code;
```

Applied against the `c_order`, customer and product sample tables, you will see the following result.

C_NAME	P_NAME	QTY	ORDER_DT
Standard Store	Washer	100	01-APR-13
Standard Store	Nail	100	01-APR-13
Quality Store	Nail	200	01-APR-13
Head Office	Nut	300	02-APR-13
Super Agent	Super_nut	400	03-APR-13
Super Agent	Screw	400	02-APR-13

You can also apply `WHERE` conditions for selecting rows on a join query. For example, in Listing 5.4, thanks to the `WHERE` condition, only products with names that do not start with “Super” will be in the query output.

Listing 5.4: JOIN and WHERE

```
SELECT c_name,
       p_name,
       o.qty,
       o.order_dt
FROM   c_order o
JOIN   customer c
ON     o.c_no = c.c_no
JOIN   product p
ON     o.p_code = p.p_code
WHERE  p_name NOT LIKE 'Super%';
```

Executing the query in Listing 5.4 against the sample tables will produce the following output rows.

C_NAME	P_NAME	QTY	ORDER_DT
Standard Store	Washer	100	01-APR-13
Standard Store	Nail	100	01-APR-13
Quality Store	Nail	200	01-APR-13
Branch Office	Nut	300	02-APR-13
Super Agent	Screw	400	02-APR-13

Joining on More than One Column

The preceding joins were on one column. Tables can also be joined on more than one column.

The syntax for a multicolumn join for two tables is as follows.

```
SELECT columns FROM table_1, table_2
WHERE table_1.column_1 = table_2.column_1
AND table_1.column_2 = table_2.column_2
...
AND table_1.column_n = table_2.column_n;
```

As an example, suppose you track order shipments in the following shipment table

C_NO	P_CODE	ORDER_DT	SHIP_QTY	SHIP_DT
10	1	01-APR-13	50	02-APR-13
10	2	01-APR-13	100	02-APR-13
20	1	01-APR-13	100	02-APR-13
30	3	02-APR-13	300	03-APR-13
10	1	01-APR-13	50	10-APR-13

To retrieve the order quantity (the qty column of the c_order table) of each shipment, you need to have a query that joins the shipment table to the order table on three columns, c_no, p_no, and order_dt, as shown in the query in Listing 5.5.

Listing 5.5: A multiple columns join

```
SELECT o.c_no,
       o.p_code,
       o.order_dt,
```

```

        ship_qty,
        ship_dt,
        qty
FROM shipment s
JOIN c_order o
ON s.c_no      = o.c_no
AND s.p_code   = o.p_code
AND s.order_dt = o.order_dt;

```

Executing this query against the `c_order` and `shipment` tables will give you the following output rows.

C_NO	P_CODE	ORDER_DT	SHIP_QTY	SHIP_DT	QTY
10	1	01-APR-13	50	10-APR-13	100
10	1	01-APR-13	50	02-APR-13	100
10	2	01-APR-13	100	02-APR-13	100
20	1	01-APR-13	100	02-APR-13	200
30	3	02-APR-13	300	03-APR-13	300

Outer Joins

All the joins I explained so far were inner joins. There is another type of join, the outer join. While an inner join query produces only related rows from the joined tables, an outer join query produces all rows from one table even when some of the rows do not have matching rows from the other table.

There are three subtypes of outer joins, `LEFT`, `RIGHT`, and `FULL`. The following points described each of these three types.

All rows from the table on the left of the left outer join will be in the output whether or not there are matching rows from the table on its right. The syntax for the left outer join is as follows.

```

SELECT columns
FROM table_1 LEFT OUTER JOIN table_2
ON table_1.column = table_2.column ... ;

```

All rows from the table on the right of the right outer join will be in the output whether or not there are matching rows from the table on its left. The syntax for the right outer join is as follows.

```
SELECT columns FROM table_1 RIGHT OUTER JOIN table_2 ON
    table_1.column = table_2.column ... ;
```

The full outer join returns all rows from both tables whether or not there are matching rows from the opposite table. The syntax for the full outer join is as follows.

```
SELECT columns
FROM table_1 FULL OUTER JOIN table_2
ON table_1.column = table_2.column ... ;
```

Listing 5.6 is an example left outer join query. This query returns all rows from the `c_order` table.

Listing 5.6: Left outer join

```
SELECT o.*,
    ship_dt
FROM c_order o
LEFT OUTER JOIN shipment s
ON o.p_code = s.p_code
AND o.c_no = s.c_no;
```

If you run this query against our example `c_order` and `shipment` tables, you will see the following output rows.

C_NO	P_CODE	QTY	ORDER_DT	SHIP_DT
10	1	100	01-APR-13	02-APR-13
10	2	100	01-APR-13	02-APR-13
20	1	200	01-APR-13	02-APR-13
30	3	300	02-APR-13	03-APR-13
10	1	100	01-APR-13	10-APR-13
40	4	400	02-APR-13	NULL
40	5	400	03-APR-13	NULL

Note that the last two rows have no matching rows from the `shipment` table and therefore their `ship_dt` column has `NULL` values.

Rows with NULL only

If you want to query only orders that have not been shipped at all, you have to put this “only” condition in the WHERE clause of your query (ship_dt IS NULL) as in the query in Listing 5.7.

Listing 5.7: NULL only rows

```
SELECT o.*,
       ship_dt
FROM c_order o
LEFT OUTER JOIN shipment s
ON o.p_code = s.p_code
AND o.c_no = s.c_no
WHERE s.ship_dt IS NULL;
```

The following output rows from the query in Listing 5.7 are customer orders that have not been shipped.

C_NO	P_CODE	QTY	ORDER_DT	SHIP_DT
40	4	400	02-APR-13	NULL
40	5	400	03-APR-13	NULL

Full Outer Joins

Suppose any order that was canceled was deleted from the c_order table (In a real-life application, canceled orders might be moved to a different table, rather than deleted). This means, some rows of the shipment table now may not have matching rows in the order table. To return orders that do not have shipments as well shipments that do not have orders, we need to write a query with the full outer join, like the one shown in Listing 5.8.

Listing 5.8: Full outer join

```
SELECT o.*, s.*
FROM c_order o
FULL OUTER JOIN shipment s
ON o.p_code = s.p_code
AND o.c_no = s.c_no ;
```

To test the query, you need delete an order, such as the order(s) placed by customer 30. Our `c_order` table now has the following rows only. After the deletion, the `c_order` table has the following rows.

C_NO	P_CODE	QTY	ORDER_DT
----	-----	-----	-----
10	1	100	01-APR-13
10	2	100	01-APR-13
20	1	200	01-APR-13
40	4	400	02-APR-13
40	5	400	03-APR-13

If you run the query in Listing 5.8, you will get the following output rows. Note that we have NULL on the rows on both sides. The NULLs on the right side are from the shipment table, the NULL on the left side (in our example here we only have one row) is coming from the `c_order` table.

C_NO	P_CO	QTY	ORDER_DT	C_NO	P_CO	ORDER_DT	SHIP_QTY	SHIP_DT
----	-----	-----	-----	----	-----	-----	-----	-----
10	1	100	01-APR-13	10	1	01-APR-13	50	02-APR-13
10	2	100	01-APR-13	10	2	01-APR-13	100	02-APR-13
20	1	200	01-APR-13	20	1	01-APR-13	100	02-APR-13
10	1	100	01-APR-13	10	1	01-APR-13	50	10-APR-13
40	4	400	02-APR-13	NULL	NULL	NULL	NULL	NULL
40	5	400	03-APR-13	NULL	NULL	NULL	NULL	NULL
NULL	NULL	NULL	NULL	30	3	02-APR-13	300	03-APR-13

Self-Joins

Assuming some of your products have substitutes and you want to record the substitutes in the product table, you then need to add a column. The new column, which is called `s_code` in the product table, contains the product code of the substitute.

The new product table, with a row having `s_code` 5, now looks like the following.

P_CODE	P_NAME	PRICE	LAUNCH_DT	S_CODE
-----	-----	-----	-----	-----
1	Nail	10	31-MAR-13	NULL
2	Washer	15	29-MAR-13	NULL
3	Nut	15	29-MAR-13	5
4	Screw	25	30-MAR-13	NULL

```

5      Super_Nut          30 30-MAR-13 NULL
6      New Nut            NULL NULL      NULL

```

To add the `s_code` column, execute the following statement:

```
ALTER TABLE product ADD (s_code VARCHAR2(6));
```

Then, to update the `p_code = 3` row, execute the following statement:

```
UPDATE product SET s_code = 5 WHERE p_code = 3;
```

If you need to know the product name of a substitute, you need the query shown in Listing 5.9. This query joins the product table to itself. This kind of join is called a self-join.

The syntax for the self join is as follows.

```

SELECT columns
FROM table alias_1
JOIN table alias_2
ON alias_1.column_x = alias_2.column_y;

```

Note that `column_x` and `column_y` are columns in the same table.

Listing 5.9: A self-join

```

SELECT prod.p_code,
       prod.p_name,
       subst.p_code subst_p_code,
       subst.p_name subst_name
FROM product prod
LEFT OUTER JOIN product subst
ON prod.s_code = subst.p_code
ORDER BY prod.p_code;

```

Here are the output rows of the query, showing “Newer Nut” in the `subst_name` column of the third row.

P_CODE	P_NAME	SUBST_	SUBST_NAME
-----	-----	-----	-----
1	Nail	NULL	NULL
2	Washer	NULL	NULL
3	Nut	5	Super_Nut
4	Screw	NULL	NULL
5	Super_Nut	NULL	NULL
6	New Nut	NULL	NULL

Multiple Uses of A Table

If a product can have more than one substitute, you need to store the product-substitute relationships in a separate table. A substitute cannot be recorded in the product table.

To create the table that stores the product-substitute relationships named `prod_subst`, execute the following statement.

```
CREATE TABLE prod_subst (p_code VARCHAR2(6), s_code VARCHAR2(6));
```

To remove the `s_code` column, execute the following statement:

```
ALTER TABLE product DROP (s_code);
```

Your product table will now contain the following rows.

P_CODE	P_NAME	PRICE	LAUNCH_DT
1	Nail	10	31-MAR-13
2	Washer	15	29-MAR-13
3	Nut	15	29-MAR-13
4	Screw	25	30-MAR-13
5	Super Nut	30	30-MAR-13
6	New Nut	NULL	NULL

Assuming that the only product with substitutes is product number 3 and its substitutes are the products number 5 and 6, the `prod_subst` table will have two rows as follows. (You need to insert these two rows using the `INSERT` statements)

P_NO	SUBS_CODE
3	5
3	6

To get the name of a product and the names of its substitutes, you need to use the product table twice, as shown in the query in Listing 5.10.

Listing 5.10: Multiple uses of a table

```
SELECT prod.p_code,
       prod.p_name,
       ps.s_code,
       subst.p_name AS s_name
```

```

FROM product prod
INNER JOIN prod_subst ps
ON prod.p_code = ps.p_code
INNER JOIN product subst
ON ps.s_code = subst.p_code
ORDER BY prod.p_code;

```

Here are the output rows from the query in Listing 5.10.

P_CODE	P_NAME	S_CODE	S_NAME
3	Nut	6	Newer Nut
3	Nut	5	Super_Nut

Natural Joins

If two tables have columns that share a name, you can naturally join the two tables on these columns. In a natural join, you do not need to specify the columns that the join should use.

The syntax for the natural join is this.

```

SELECT columns FROM table_1 NATURAL JOIN table_2 ... ;

```

Listing 5.11 shows an example of a natural join on the `c_order` and `customer` tables. This natural join implicitly joins the tables on their `c_no` columns.

Listing 5.11: A natural join

```

SELECT * FROM c_order NATURAL JOIN customer;

```

Running the query in Listing 5.11 gives you the following output rows.

C_NO	P_CO	QTY	ORDER_DT	C_NAME
10	1	100	01-APR-13	Standard Store
10	2	100	01-APR-13	Standard Store
20	1	200	01-APR-13	Quality Store
40	4	400	02-APR-13	Super Agent
40	5	400	03-APR-13	Super Agent

Natural Outer Joins

The natural join is also applicable to the outer join. Consider the query in Listing 5.12.

Listing 5.12: A natural outer join

```
SELECT * FROM c_order NATURAL RIGHT JOIN customer;
```

Applying the query against the `c_order` and `customer` tables will give you the following output rows.

C_NO	P_CODE	QTY	ORDER_DT	C_NAME
10	1	100	01-APR-13	Standard Store
10	2	100	01-APR-13	Standard Store
20	1	200	01-APR-13	Quality Store
40	4	400	02-APR-13	Super Agent
40	5	400	03-APR-13	Super Agent
30	NULL	NULL	NULL	Head Office

Mixing Natural Joins with Different Column Names

If you need to join on more than one column, and the second column pair does not share a name, you can specify the different column names in the `WHERE` clause. Listing 5.13 shows an example of such a case.

Listing 5.13: Mixing natural join with different column names

```
SELECT * FROM c_order o NATURAL RIGHT JOIN product p WHERE
    o.order_dt = p.launch_dt;
```

In the query in Listing 5.13, in addition to the natural join on the same `c_no` column, the rows from the two tables have to be joined on the two dates.

The query does not return any row as we don't have any order of a product with the same order date as the product's launch date.

The USING Keyword

A natural join will use all columns with the same names from the joined tables. If you want your query to join only on some of these identically named columns, instead of using the NATURAL keyword, use the USING keyword.

The syntax for joining two tables with USING is as follows.

```
SELECT columns
FROM table_1
JOIN table_2 USING (column);
```

Listing 5.14, for example, joins the `c_order` table to the `shipment` table on only their `p_code` columns. It does not join the tables on their `c_no` columns. This query gives you the total quantity shipped by product code.

Listing 5.14: USING

```
SELECT p_code,
       SUM(s.ship_qty)
FROM c_order o
JOIN shipment s USING (p_code)
GROUP BY p_code;
```

Executing this query against our example `c_order` and `shipment` tables will produce the following output rows.

```
P_CODE  SUM(S.SHIP_QTY)
-----
1              400
2              100
```

Summary

In this chapter you learned about getting data from multiple tables. You learned how to use the various types of joins for this purpose.

Chapter 6

Subqueries

A subquery is a query nested within another query. The containing query is called an outer query. A subquery in turn can have a nested query, making it a multiple nested query.

This chapter discusses subqueries in detail.

Single-Row Subqueries

A single-row subquery is a subquery that returns a single value. A single-row subquery can be placed in the WHERE clause of an outer query. The return value of the subquery is compared with a column of the outer query using one of the comparison operators. (Comparison operators were discussed in Chapter 2, “Basic Queries”)

For example, the query in Listing 6.1 contains a single-row subquery that returns the highest sale price recorded for a product. The outer query returns all products from the product table that have that highest price (30.00), the Super_Nut and Newer Nut products.

Listing 6.1: A subquery that returns a single value

```
SELECT *
FROM product
WHERE price =
  (SELECT MAX(price)
   FROM product p
   INNER JOIN c_order o
   ON p.p_code = o.p_code
  );
```

Note that the subquery in Listing 6.1 is printed in bold.

Executing the query in Listing 6.1 against this product table

P_CODE	P_NAME	PRICE	LAUNCH_DT
1	Nail	10.00	31-MAR-13
2	Washer	15.00	29-MAR-13
3	Nut	15.00	29-MAR-13
4	Screw	25.00	30-MAR-13
5	Super_Nut	30.00	30-MAR-13
6	Newer_Nut	30.00	01-MAY-13

and the following c_order (customer order) table

C_NO	P_CODE	QTY	ORDER_DT
10	1	100	01-APR-13
10	2	100	01-APR-13
20	1	200	01-APR-13
30	3	300	02-APR-13
40	4	400	02-APR-13
40	5	400	03-APR-13

will give you the following result.

P_CODE	P_NAME	PRICE	LAUNCH_DT
5	Super_Nut	30.00	30-MAR-13
6	Newer_Nut	30.00	01-MAY-13

The column and subquery result do not have to be the same column, but they must have compatible data types. In the query in Listing 6.1, the price column of the product table is a numeric type and the subquery also returns a numeric type.

If the subquery returns more than one value, you will get an error message. For example, the query in Listing 6.2 throws an error because the subquery returns more than one value.

Listing 6.2: Single-row subquery error

```
SELECT *
FROM product
```

```

WHERE price =
  (SELECT MAX(price)
   FROM product p
   INNER JOIN c_order s
   ON p.p_code = s.p_code
   GROUP BY p.launch_dt
  );

```

Here is the error that you will see if you run the query in Listing 6.2.

```

ERROR at line 4:
ORA-01427: single-row subquery returns more than one row

```

Multiple-Row Subqueries

A subquery that returns more than one value is called a multiple-row subquery. This type of subquery also occurs in the WHERE clause of an outer query, however instead of using a comparison operator, you use IN or NOT IN in the WHERE clause.

For example, the query in Listing 6.3 contains a multiple-row subquery.

Listing 6.3: Using a multiple-row subquery

```

SELECT *
FROM product
WHERE price IN
  (SELECT MAX(price)
   FROM product p
   INNER JOIN c_order s
   ON p.p_code = s.p_code
   GROUP BY p.launch_dt
  );

```

Run against the same product and order tables, the subquery will return these three values:

```

MAX(PRICE)
-----
      15
      30
      10

```

The overall query output will be as follows.

P_CODE	P_NAME	PRICE	LAUNCH_DT
1	Nail	10.00	31-MAR-13
2	Washer	15.00	29-MAR-13
3	Nut	15.00	29-MAR-13
5	Super_Nut	30.00	30-MAR-13
6	Newer Nut	30.00	01-MAY-13

The ALL and ANY Operators

In addition to IN and NOT IN, you can also use the ALL and ANY operators in a multiple-row subquery. With ALL or ANY you use a comparison operator. For instance, the query in Listing 6.4 uses the ALL operator to compare the price column with the subquery result.

Listing 6.4: Using ALL

```
SELECT *
FROM product
WHERE price >= ALL
  (SELECT MAX(price)
   FROM product p
   INNER JOIN c_order o
   ON o.p_code = o.p_code
   GROUP BY p.launch_dt
 )
ORDER BY p_code;
```

Run against the same product and order tables, the subquery in Listing 6.4 (printed in bold) returns these results:

```
MAX(PRICE)
-----
          15
          30
          10
```

The query output will consist of only rows whose price is greater or equal to all the values returned by the subquery.

Here is the query output.

P_CODE	P_NAME	PRICE	LAUNCH_DT
5	Super_Nut	30.00	30-MAR-13
6	Newer_Nut	30.00	01-MAY-13

As another example, the query in Listing 6.5 is similar to the one in Listing 6.4 except that the equal operator is used to compare the price with the subquery result.

Listing 6.5: Using ALL for equal comparison

```
SELECT *
FROM product
WHERE price = ALL
  (SELECT MAX(price)
   FROM product p
   INNER JOIN c_order o
   ON o.p_code = o.p_code
   GROUP BY p.launch_dt
  )
ORDER BY p_code;
```

As in the previous example, the subquery will return these values.

```
MAX(PRICE)
-----
      15
      30
      10
```

The query output then consists of only rows whose price equals to all these values, which is not possible as each product has only one price. As a result, the query returns no rows. Here is a message you will see if you run the query.

```
no rows selected
```

Subqueries Returning Rows Having the Same Value

If you use `= ALL` and the subquery returns one row or multiple rows with the same value you will not get a “no rows selected” message.

You can also use the `ANY` operator to compare a column with the values returned by a subquery. If you use `ALL`, the query compares a column to all values (every one of the values) returned by the subquery. If you use `ANY`, the query compares a column to any one of the values returned by the subquery.

For example, the query in Listing 6.6 compares the price column for equality to any of the maximum prices returned by the subquery, in other words, the `WHERE` condition is true if the price equals to any of maximum prices.

Listing 6.6: Using the equal comparison to `ANY` value

```
SELECT *
FROM product
WHERE price = ANY
  (SELECT MAX(price)
   FROM product p
   INNER JOIN c_order o
   ON p.P_code = o.p_code
   GROUP BY p.launch_dt
  )
ORDER BY p_code;
```

The subquery will return these rows.

```
MAX(PRICE)
-----
          15
          30
          10
```

The outer query output will consist of any product that has a price equal to any of these (maximum price) values. Here is the query output.

```
P_CODE P_NAME      PRICE LAUNCH_DT
```

```

-----
1      Nail      10.00 31-MAR-13
2      Washer   15.00 29-MAR-13
3      Nut       15.00 29-MAR-13
5      Super_Nut 30.00 30-MAR-13
6      Newer Nut 30.00 01-MAY-13

```

Multiple Nested Subqueries

A subquery can contain another query, making it a query with multiple nested subqueries. The query in Listing 6.7, for example, has multiple nested subqueries. Notice the two IN's, one for each of the two nested queries? The query returns only customers who have not ordered any product having name that contains 'Nut'.

Listing 6.7: Query with multiple nested subqueries

```

SELECT customer.*
FROM customer
WHERE c_no IN
    (SELECT c_no
     FROM c_order
     WHERE p_code IN
        (SELECT p_code FROM product WHERE p_name NOT LIKE '%Nut%'
        )
    );

```

Here is the query result.

```

C_NO C_NAME
----
40    Super Agent
10    Standard Store
20    Quality Store

```

Correlated Subqueries

All the preceding subqueries are independent of their outer queries. A subquery can also be related to its outer query, where one or more column from the outer query table is (are) related to the column(s) of the subquery table in the WHERE clause of the subquery. This type of subquery is called the correlated subquery.

As an example, the query in Listing 6.8 contains a correlated subquery that returns only customers who have not ordered any product whose name contains 'Nut'. Note that the `c_no` column of the outer query table, `customer`, is related to the `c_no` column of the `c_order` table of the subquery.

Listing 6.8: Using a correlated subquery

```
SELECT customer.*
FROM customer
WHERE c_no IN
    (SELECT c_no
     FROM c_order o
     JOIN product p
     ON o.p_code = p.p_code
     WHERE p_name NOT LIKE '%Nut%'
     AND customer.c_no = o.c_no
    );
```

The following are the query result.

```
C_NO C_NAME
----
```

40	Super Agent
10	Standard Store
20	Quality Store

Summary

In this chapter you learned the various types of subqueries, such as nested and correlated subqueries. In the next chapters you will apply the lesson you learned in this chapter to combine the results of two or more queries.

Chapter 7

Compound Queries

You can combine the results of two or more `SELECT` statements using the `UNION ALL`, `UNION`, `INTERSECT`, or `MINUS` operators. The number of output columns from every statement must be the same and the corresponding columns must have identical or compatible data types.

This chapter shows you how to combine query results.

UNION ALL

When you combine two or more queries with the `UNION ALL` operator, the overall output will be the total rows from all the queries. For example, take a look at the query in Listing 7.1. This query consists of two `SELECT` statements.

Listing 7.1: Using `UNION ALL`

```
SELECT p.p_code, p.p_name, 'FIRST QUERY' query
FROM product p WHERE p.p_name LIKE '%Nut%'
UNION ALL
SELECT p.p_code,
       p.p_name,
       'SECOND_QUERY' query
FROM c_order o
INNER JOIN product p
ON o.p_code = p.p_code;
```

Note that the `'FIRST QUERY'` and `'SECOND_QUERY'` literals in the first and second `SELECT` statements, respectively, are just labels to identify where a row is coming from.

Assuming that the product table has the following rows

P_CODE	P_NAME	PRICE	LAUNCH_DT
1	Nail	10	31-MAR-13
2	Washer	15	29-MAR-13
3	Nut	15	29-MAR-13
4	Screw	25	30-MAR-13
5	Super_Nut	30	30-MAR-13
6	New Nut	30	01-MAY-13

and the c_order table contains the following records

C_NO	P_CODE	QTY	ORDER_DT
10	1	100	01-APR-13
10	2	100	01-APR-13
20	1	200	01-APR-13
40	4	400	02-APR-13
40	5	400	03-APR-13
30	3	300	02-APR-13

the query in Listing 7.1 will return the following output.

P_CODE	P_NAME	QUERY
3	Nut	FIRST QUERY
5	Super_Nut	FIRST QUERY
6	New Nut	FIRST QUERY
1	Nail	SECOND_QUERY
1	Nail	SECOND_QUERY
2	Washer	SECOND_QUERY
3	Nut	SECOND_QUERY
4	Screw	SECOND_QUERY
5	Super_Nut	SECOND_QUERY

Note that the output of the query in Listing 7.1 comprises all the records from the first SELECT statement followed by the rows from the second SELECT statement. You can of course use the ORDER BY clause to re-order this. For instance, the query in Listing 7.2 modifies the query in Listing 7.1 by ordering the results on the p_code column using the ORDER BY clause.

Listing 7.2: Ordering output rows of a compound query

```

SELECT p_code, p_name, 'FIRST QUERY' query
FROM product p WHERE p_name LIKE '%Nut%'
UNION ALL
SELECT p.p_code,
       p_name,
       'SECOND_QUERY' query
FROM c_order o
INNER JOIN product p
ON o.p_code = p.p_code
ORDER BY p_code;

```

The result of the query in Listing 7.2 is as follows.

P_CODE	P_NAME	QUERY
-----	-----	-----
1	Nail	SECOND_QUERY
1	Nail	SECOND_QUERY
2	Washer	SECOND_QUERY
3	Nut	SECOND_QUERY
3	Nut	FIRST_QUERY
4	Screw	SECOND_QUERY
5	Super_Nut	SECOND_QUERY
5	Super_Nut	FIRST_QUERY
6	New Nut	FIRST_QUERY

UNION

UNION is similar to UNION ALL. However, with UNION duplicate rows will be returned once only. For example, consider the query in Listing 7.3 that consists of two SELECT elements.

Listing 7.3: Using UNION

```

SELECT p_code,
       p_name
FROM product p
WHERE p_name LIKE '%Nut%'
UNION
SELECT p.p_code,
       p_name

```

```
FROM c_order o
INNER JOIN product p
ON o.p_code = p.p_code
ORDER BY p_code;
```

Here is the output of the query.

P_CODE	P_NAME
-----	-----
1	Nail
2	Washer
3	Nut
4	Screw
5	Super Nut
6	New Nut

INTERSECT

When you combine two or more queries with the INTERSECT operator, the output will consist of rows common to all the participating SELECT statements. In other words, only if a row is returned by all the SELECT statements will the row be included in the final result.

Let's take a look at the example in Listing 7.4.

Listing 7.4: Using INTERSECT

```
SELECT p_code,
       p_name
FROM product p
WHERE p_name LIKE '%Nut%'
INTERSECT
SELECT p.p_code,
       p_name
FROM c_order o
INNER JOIN product p
ON o.p_code = p.p_code
ORDER BY p_code;
```

Running the query against the same product and c_order tables will return the following result.

P_CODE	P_NAME
3	Nut
5	Super_Nut

MINUS

When you combine two SELECT statements using the MINUS operator, the final output will be rows from the first query that are not returned by the second query. Take a look at the example in Listing 7.5.

Listing 7.5: Using MINUS

```
SELECT p_code,
       p_name
FROM product p
WHERE p_name LIKE '%Nut%'
MINUS
SELECT p.p_code,
       p_name
FROM c_order o
INNER JOIN product p
ON o.p_code = p.p_code
ORDER BY p_code;
```

Running this query against the same product and c_order tables produces the following output.

P_CODE	P_NAME
6	New Nut

With MINUS, the order of constituting SELECT statements is important. If you swap the two SELECT statements in the query in Listing 7.5, the output will be totally different. Take a look at the query in Listing 7.6, which is identical to that in Listing 7.5 except for the fact that the two SELECT statements have been swapped.

Listing 7.6: Swapping the participating SELECT statements in a query combined with MINUS

```
SELECT p.p_code,  
       p_name  
FROM c_order o  
INNER JOIN product p  
ON o.p_code = p.p_code  
MINUS  
SELECT p_code,  
       p_name  
FROM product p  
WHERE p_name LIKE '%Nut%'  
ORDER BY p_code;
```

The output of the query in Listing 7.6 is this:

P_CODE	P_NAME
-----	-----
1	Nail
2	Washer
4	Screw

Summary

In this chapter you learned that you can combine the output of two or more SELECT statements. There are five operators you can use for this purpose, UNION ALL, UNION, INTERSECT, and MINUS.

Chapter 8

Views

A view is effectively a predefined query. You create and use views most frequently for the following purposes:

- Hiding table columns (for security protection)
- Presenting pre-computed columns (in lieu of table columns)
- Hiding queries (so that the query outputs are available without running the queries)

This chapter discusses view and presents examples of views.

Creating and Using Views

You create a view using the CREATE VIEW statement. Here is its syntax.

```
CREATE VIEW view_name (columns) AS SELECT ... ;
```

The SELECT statement at the end of the CREATE VIEW statement is the predefined query. When you use a view its predefined query is executed. Since a query result is a table that is not persisted (stored) in the database, a view is also known as a virtual table. The table in the SELECT statement of a view is known as a base table.

One of the reasons you use a view is when you have a table you need to share with other people. If you don't want some of the table columns viewable by others, you can use a view to hide those columns. You would then share the view and restrict access to the base table.

For example, Listing 8.1 shows an SQL statement for creating a view called `product_v` that is based on the `product` table. The view hides the price column of the base table.

Listing 8.1: Using a view to hide columns

```
CREATE VIEW product_v
  (p_code , p_name
   ) AS
SELECT p_code, p_name FROM product;
```

The `product_v` view can now be used just as you would any database table. For example, the following statement displays all columns in the `product_v` view.

```
SELECT * FROM product_v WHERE p_name NOT LIKE '%Nut%';
```

Assuming the `product` table contains these rows

P_CODE	P_NAME	PRICE	LAUNCH_DT
1	Nail	10.00	31-MAR-13
2	Washer	15.00	29-MAR-13
3	Nut	15.00	29-MAR-13
4	Screw	25.00	30-MAR-13
5	Super_Nut	30.00	30-MAR-13
6	New Nut	30.00	01-MAY-13

selecting all columns from the `product_v` view will return these rows.

P_CODE	P_NAME
1	Nail
2	Washer
4	Screw

Note that within a database a view name must be unique among all the views and tables in the database.

Another use of the view is to derive computed columns not available in the base table(s). Here is an example.

Suppose the `product` table stores profit margins for each product as follows.

P_CODE	P_NAME	PRICE	LAUNCH_DT	MARGIN
1	Nail	10.00	31-MAR-13	1
2	Washer	15.00	29-MAR-13	2
3	Nut	15.00	29-MAR-13	2
4	Screw	25.00	30-MAR-13	5
5	Super_Nut	30.00	30-MAR-13	5
6	New Nut	30.00	01-MAY-13	5

If you want other users to see the selling price (price + margin) but not the supplier price (price) or the margins in the product table, you can create a view that computes the selling price from the product price and margin, as demonstrated by the query in Listing 8.2. This query creates a view called `product_sell_v` that includes a computed column `sell_price`. The value for `sell_price` comes from the price and margin columns in the product table.

Listing 8.2: A view with a computed column

```
CREATE VIEW product_sell_v
  (p_no , p_name, sell_price
   ) AS
SELECT p_code, p_name, (price + margin) FROM product;
```

Selecting all data from `product_sell_v` (using “`SELECT * FROM product_sell_v`”) returns these rows.

P_NO	P_NAME	SELL_PRICE
1	Nail	11
2	Washer	17
3	Nut	17
4	Screw	30
5	Super_Nut	35
6	New Nut	35

Users of a view don’t need to know the details of its predefined query. They only need to know what data is available from the view. Referring back to the self-join example in Chapter 5, “Joins”, you can create the view defined in Listing 8.3 to hide the self-join query. While the rows from the product table only have the product code of the substitutes, this view will give you the names of their substitutes as well.

Listing 8.3: Hiding Query

```

CREATE VIEW prod_subs_v AS
SELECT prod.p_code,
       prod.p_name,
       subst.p_code subst_p_code,
       subst.p_name subst_name
FROM product prod
LEFT OUTER JOIN product subst
ON prod.s_code = subst.p_code
ORDER BY prod.p_code;

```

Recall that the product table has the following rows.

P_CODE	P_NAME	PRICE	LAUNCH_DT	MARGIN	S_CODE
1	Nail	10.00	31-MAR-13	1	6
2	Washer	15.00	29-MAR-13	2	7
3	Nut	15.00	29-MAR-13	2	5
4	Screw	25.00	30-MAR-13	5	NULL
5	Super_Nut	30.00	30-MAR-13	5	NULL
6	New Nut	30.00	01-MAY-13	5	NULL

Executing the following query that uses the view created with the statement in Listing 8.3,

```
SELECT * FROM prod_subs_v;
```

produces the following rows.

P_CODE	P_NAME	SUBST_	SUBST_NAME
1	Nail	6	New Nut
2	Washer	NULL	NULL
3	Nut	5	Super_Nut
4	Screw	NULL	NULL
5	Super_Nut	NULL	NULL
6	New Nut	NULL	NULL

Nested Views

A view can be based on another view. Such a view is called a nested view.

As an example, the `ps_noname_v` view in Listing 8.4 hides the `p_name` column and is based on the `product_sell_v` view created earlier.

Listing 8.4: A nested view

```
CREATE VIEW ps_noname_v
  (p_no , sell_price
  ) AS
SELECT p_no, sell_price FROM product_sell_v;
```

Running this statement

```
SELECT * FROM ps_noname_v;
```

will give you the following output rows

P_NO	SELL_PRICE
-----	-----
1	11
2	17
3	17
4	30
5	35
6	35

Managing Views

You can easily manage your views in Oracle. To see all views in the current database, execute the following statement.

```
SELECT VIEW_NAME FROM USER_VIEWS;
```

This will return the following output, which may differ for other databases.

```
VIEW_NAME
```

```
-----  
PRODUCT_SELL_V  
PRODUCT_V  
PROD_SUBS_V  
PS_NONAME_V
```

To delete a view, use the **DROP VIEW** statement. The syntax for the **DROP VIEW** statement is as follows.

```
DROP VIEW view_name;
```

For example, the statement in Listing 8.5 will delete the `ps_noname_v` view.

Listing 8.5: Deleting the `ps_noname_v` view

```
DROP VIEW ps_nomane_v;
```

After running the statement in Listing 8.5, listing the views in the database again will give you these results.

```
VIEW_NAME  
-----  
PRODUCT_SELL_V  
PRODUCT_V  
PROD_SUBS_V
```

Summary

A view is a predefined query that you can use to hide columns, include pre-computed columns, and so on. In this chapter you learned how to create and manage views.

Chapter 9

Built-in Functions

The Oracle database provides functions that you can use in your queries. These built-in functions can be grouped into numeric functions, character functions, datetime functions, and functions for handling null values. The objective of this chapter is to introduce you to some of these functions.

Numeric Functions

The following are some of the more important numeric functions.

ABS

`ABS(n)` returns the absolute value of *n*. For example, the following query returns the absolute value of (price - 20.00) as the third column.

```
SELECT p_code, price, (price - 20), ABS(price - 20.00) FROM product;
```

Applying the query to this product table

P_CODE	P_NAME	PRICE	LAUNCH_DT
1	Nail	10	31-MAR-13
2	Washer	15	29-MAR-13
3	Nut	15	29-MAR-13
4	Screw	25	30-MAR-13
5	Super_Nut	30	30-MAR-13
6	Newer Nut	15	01-MAY-13

you will get this result.

P_CODE	PRICE	PRICE-20.00	ABS (PRICE-20.00)
-----	-----	-----	-----
1	10	-10	10
2	15	-5	5
3	15	-5	5
4	25	5	5
5	30	10	10
6	15	-5	5

ROUND

`ROUND(n, d)` returns a number rounded to a certain number of decimal places. The argument *n* is the number to be rounded and *d* the number of decimal places. For example, the following query uses `ROUND` to round price to one decimal place.

```
SELECT p_code, price, ROUND (price, 1) FROM product;
```

Assuming the product table contains these rows

P_CODE	P_NAME	PRICE	LAUNCH_DT	S_CODE
-----	-----	-----	-----	-----
1	Nail	10.15	31-MAR-13	NULL
2	Washer	15.99	29-MAR-13	NULL
3	Nut	15.5	29-MAR-13	6
4	Screw	25.25	30-MAR-13	NULL
5	Super_Nut	30.33	30-MAR-13	NULL
6	Newer Nut	15.55	01-MAY-13	NULL

the output of the query is this.

P_CODE	PRICE	ROUND (PRICE, 1)
-----	-----	-----
1	10.15	10.2
2	15.99	16
3	15.5	15.5
4	25.25	25.3
5	30.33	30.3
6	15.55	15.6

SIGN

SIGN(*n*) returns a value indicating the sign of *n*. This function returns -1 for $n < 0$, 0 for $n = 0$, and 1 for $n > 0$. As an example, the following query uses **SIGN** to return the sign of (price – 15).

```
SELECT p_code, price, SIGN(price - 15) FROM product;
```

Assuming the product table has the following records

P_CODE	P_NAME	PRICE	LAUNCH_DT
1	Nail	10.00	31-MAR-13
2	Washer	15.00	29-MAR-13
3	Nut	15.00	29-MAR-13
4	Screw	25.00	30-MAR-13
5	Super_Nut	30.00	30-MAR-13
6	Newer Nut	15.00	01-MAY-13

the query output will be as follows.

P_CODE	PRICE	SIGN(PRICE-15)
1	10.00	-1
2	15.00	0
3	15.00	0
4	25.00	1
5	30.00	1
6	15.00	0

TRUNC

TRUNC(*n*, *d*) returns a number truncated to a certain number of decimal places. The argument *n* is the number to truncate and *d* the number of decimal places. For example, the following query truncates price to one decimal place.

```
SELECT p_code, price, TRUNC(price, 1) FROM product;
```

Assuming the product table contains these rows

P_CODE	P_NAME	PRICE	LAUNCH_DT	S_CODE
1	Nail	10.15	31-MAR-13	NULL
2	Washer	15.99	29-MAR-13	NULL
3	Nut	15.5	29-MAR-13	6
4	Screw	25.25	30-MAR-13	NULL
5	Super_Nut	30.33	30-MAR-13	NULL
6	Newer Nut	15.55	01-MAY-13	NULL

the query result will be as follows.

P_CODE	PRICE	TRUNC(PRICE,1)
1	10.15	10.1
2	15.99	15.9
3	15.50	15.5
4	25.25	25.2
5	30.33	30.3
6	15.55	15.5

Character Functions

The following are some of the more important string functions.

CONCAT

CONCAT(*string1*, *string2*) concatenates *string1* and *string2* and returns the result. If you pass a number as an argument, the number will first be converted to a string. In the following example three strings, *p_name*, a dash, and *description*, are concatenated.

```
SELECT p_code, CONCAT(CONCAT(p_name, ' -- ') , price) FROM product;
```

The price column value will be converted automatically to a string.

With the product table containing these rows

P_CODE	P_NAME	PRICE	LAUNCH_DT	S_CODE
1	Nail	10.15	31-MAR-13	NULL

2	Washer	15.99	29-MAR-13	NULL
3	Nut	15.5	29-MAR-13	6
4	Screw	25.25	30-MAR-13	NULL
5	Super_Nut	30.33	30-MAR-13	NULL
6	Newer Nut	15.55	01-MAY-13	NULL

executing the query against the product table will return this result.

```
P_CODE CONCAT(CONCAT(P_NAME, '--'), PRICE)
-----
```

1	Nail -- 10.15
2	Washer -- 15.99
3	Nut -- 15.5
4	Screw -- 25.25
5	Super_Nut -- 30.33
6	Newer Nut -- 15.55

You can also use the || operator to concatenate strings. The following query produces the same output as the one above.

```
SELECT p_code, p_name || ' -- ' || price FROM product;
```

LOWER and UPPERLOWER(*str*) converts *str* to lowercase and UPPER(*str*) converts *str* to uppercase. For example, the following query uses LOWER and UPPER.

```
SELECT p_name, LOWER(p_name), UPPER(p_name) FROM product;
```

Executing the query against the product table gives you this result.

P_NAME	LOWER(P_NAME)	UPPER(P_NAME)
Nail	nail	NAIL
Washer	washer	WASHER
Nut	nut	NUT
Screw	screw	SCREW
Super_Nut	super_nut	SUPER_NUT
Newer Nut	newer nut	NEWER NUT

LENGTH

LENGTH(*str*) returns the length of string *str*. The length of a string is the number of characters in it. For example, the following query returns the length of *p_name* as the second column.

```
SELECT p_name, LENGTH(p_name) FROM product;
```

The result would look like this.

P_NAME	LENGTH(P_NAME)
Nail	4
Washer	6
Nut	3
Screw	5
Super_Nut	9
Newer Nut	9

SUBSTR

SUBSTR(*str*, *start_position*, [*length*]) returns a substring of *str* starting from the position indicated by *start_position*. If *length* is not specified, the function returns a substring from *start_position* to the last character in *str*. If *length* is present, the function returns a substring which is *length* characters long starting from *start_position*. If *length* is less than 1, the function returns an empty string.

Suppose you have a customer table with the following rows.

C_NO	C_NAME	PHONE
10	Standard Store	1-416-223-4455
20	Quality Store	1-647-333-5566
30	Branch Office	1-416-111-2222
40	Super Agent	1-226-777-8888

The following query

```
SELECT SUBSTR(phone, 3) FROM customer;
```

will return the following result

```
SUBSTR(PHONE, 3)
-----
416-223-4455
647-333-5566
416-111-2222
226-777-8888
```

And the following query

```
SELECT CONCAT( SUBSTR(phone, 7, 3) , SUBSTR(phone, 11, 3)) phone
FROM customer;
```

will return this result.

```
PHONE
-----
416-223
647-333
416-111
226-777
```

Datetime Functions

The following are some of the more important datetime functions.

CURRENT_DATE

`CURRENT_DATE()` returns the current date (the current date of the Oracle server at the time you run the query). For instance, the following query

```
SELECT p_code, launch_dt, CURRENT_DATE FROM product;
```

will return a result that looks like this. The actual value of the third column will depend on when you run the query.

```
P_NO LAUNCH_DT CURRENT_DATE
---- -
1      31-MAR-13 29-APR-13
2      29-MAR-13 29-APR-13
```

```

3      29-MAR-13 29-APR-13
4      30-MAR-13 29-APR-13
5      30-MAR-13 29-APR-13
6      01-MAY-13 29-APR-13

```

TO_CHAR

`TO_CHAR(dt, fmt_specifier)` converts a date (*dt*) to a string in the format specified by *fmt_specifier*. In the following example, the `launch_dt` column is formatted with a format specifier that has three components:

- DD - the day of the month
- MONTH - the long name of the month in uppercase
- YYYY - the year

```

SELECT p_code, TO_CHAR(launch_dt, 'DD MONTH YYYY') reformatted_dt
FROM product;

```

Running the query will give you something like this.

```

P_CODE REFORMATTED_DT
-----
1      31 MARCH      2013
2      29 MARCH      2013
3      29 MARCH      2013
4      30 MARCH      2013
5      30 MARCH      2013
6      01 MAY        2013

```

NULL-related functions

The following are some of the functions that can be used to handle null values.

COALESCE

`COALESCE(expr-1, expr-2, ..., expr-n)` returns the first expression from the list that is not NULL. For example, suppose your product table contains the following rows

P_CODE	P_NAME	PRICE	LAUNCH_DT	MIN_PRICE
1	Nail	10.00	31-MAR-13	NULL
2	Washer	15.00	29-MAR-13	NULL
3	Nut	15.00	29-MAR-13	12.00
4	Screw	20.00	30-MAR-13	17.00
5	New Nut	NULL	01-APR-13	10.00
6	Newer Nut	NULL	01-MAY-13	NULL

and you want to view the `sale_price` column of the products using this formula:

- If price is available (not NULL) then discount it by 10%
- If price is not available then return `min_price`
- If both price and `min_price` are not available, return 5.0

You can use `COALESCE` to produce the correct `sale_price` values:

```
SELECT p_name, price, min_price,
COALESCE((price * 0.9), min_price, 5.0) sale_price
FROM product;
```

Here is the query result.

P_NAME	PRICE	MIN_PRICE	SALE_PRICE
Nail	10.00	NULL	9
Washer	15.00	NULL	13.5
Nut	15.00	12.00	13.5
Screw	20.00	17.00	18
New Nut	NULL	10.00	10
Newer Nut	NULL	NULL	5

NULLIF

NULLIF (*expr1*, *expr2*) compares *expr1* and *expr2*. If they are equal, the function returns null. If they are not equal, the function returns *expr1*.

Suppose you store product old prices in a table named `old_price`. The following `old_price` table, for example, shows two old prices of the Nut product, the products with `p_code = 3`.

P_CODE	P_NAME	PRICE	LAUNCH_DT
3	Nut	15.00	01-MAR-10
3	Newer Nut	12.00	01-APR-12

Just say you want to show the old products with their current price. The following query that employs the NULLIF function can solve your problem.

```
SELECT p_code,
       p_name,
       NULLIF(p.price, op.price) current_price
FROM product p
JOIN old_product op USING (p_code);
```

Applying the query against the following product table and the `old_price` table

P_CODE	P_NAME	PRICE	LAUNCH_DT
1	Nail	10.00	31-MAR-13
2	Washer	15.00	29-MAR-13
3	Better Nut	10.00	01-MAY-13
4	Screw	15.00	01-MAY-13

returns the two old nuts as follows

P_CODE	P_NAME	CURRENT_PRICE
3	Nut	10
3	Newer Nut	10

NVL

`NVL (expr1, expr2)` returns *exprs1* if *expr1* is not NULL; otherwise, it returns *expr2*.

For example, suppose you want to compare old and current prices. Applying NVL in the following query gives you the old price from the product table if the product has never been superseded; otherwise, if a product has been superseded, its old price will come from the old_product table.

```
SELECT p_code,
       p.p_name,
       p.price current_price,
       NVL(op.price,p.price) old_price
FROM product p
LEFT OUTER JOIN old_product op USING (p_code);
```

Here is the result.

P_CODE	P_NAME	CURRENT_PRICE	OLD_PRICE
-----	-----	-----	-----
1	Nail	10	10
2	Washer	15	15
3	Nut	10	12
3	Nut	10	15
4	Screw	15	15

The query result shows that the only product that has been superseded is Nut, and it has been superseded twice. Therefore, its old prices are shown from the old_product table. The other products have never been superseded so their current and old prices are the same. Their old_price is coming from the product table because its op.price column, the first parameter of the NVL function, is NULL.

Summary

You learned some of the built-in functions that you can use in the Oracle database. If you are interested in learning more about built-in functions, consult the Oracle manual, available at [Oracle website](#).

Chapter 10

PL/SQL

PL/SQL, short for Procedural Language extension to SQL, complements SQL with a procedural programming language. PL/SQL is a feature of the Oracle database.

The objective of this chapter is to introduce some of the most commonly used PL/SQL features such as

- row-by-row processing of query output
- if-then-else decision logic
- exception handling
- user-defined functions

Row-by-row Processing

You learned in the previous chapters that the output of a query can be more than one row. You can write a PL/SQL program to process query output row-by-row sequentially.

The structure of the PL/SQL program for row-by-row processing is as follows.

```
BEGIN
  FOR output_row_variable IN (
    SELECT ...)
  LOOP
    row processing statements;
  END LOOP;
END;
```

For example, the program in Listing 10.1 makes use of a join query and its output rows are stored in a variable named *invc*. In the processing loop, every row from *invc* is inserted into the invoice table.

Listing 10.1: Row-by-row processing

```
BEGIN
  FOR invc IN
    (SELECT c_no,
           c_name,
           p_name,
           qty,
           price unit_prc,
           (qty * price) total_prc,
           sysdate invoice_dt,
           launch_dt
    FROM c_order NATURAL
    JOIN product NATURAL
    JOIN customer
    )
  LOOP
    INSERT
    INTO invoice VALUES
      (
        invc.c_no,
        invc.c_name,
        invc.p_name,
        invc.qty,
        invc.unit_prc,
        invc.total_prc,
        invc.invoice_dt
      );
  END LOOP;
END;
```

Suppose you have *c_order*, *customer*, and *product* tables like the ones shown in Tables 10.1, 10.2, and 10.3, respectively, and suppose you also have an invoice table that is empty.

C_NO	P_CO	QTY	ORDER_DT
10	1	100	01-APR-13
10	2	100	01-APR-13
20	1	200	01-APR-13
40	4	400	02-APR-13
40	5	400	03-APR-13

Table 10.1: The c_order table

C_NO	C_NAME	C	C_DATE
10	Standard Store	1	25-JUL-13
20	Quality Store	2	27-JUL-13
30	Head Office	3	19-JUL-13
40	Super Agent	4	14-JUL-13

Table 10.2: The customer table

P_CODE	P_NAME	PRICE	LAUNCH_DT
1	Nail	10.00	31-MAR-13
2	Washer	15.00	29-MAR-13
3	Nut	15.00	29-MAR-13
4	Screw	25.00	30-MAR-13
5	Super_Nut	30.00	30-MAR-13
6	New Nut	NULL	NULL

Table 10.3: The product table

If you enter and execute the PL/SQL program in Listing 10.1 in SQL*Plus, your SQL*Plus screen will look like that in Figure 10.1. Note that to execute a PL/SQL program you need to enter the forward slash / after the last END;.

```

Oracle SQL*Plus
File Edit Search Options Help

SQL> BEGIN
  2   FOR invc IN
  3   (SELECT c_no,
  4         c_name,
  5         p_name,
  6         qty,
  7         price unit_prc,
  8         (qty * price) total_prc,
  9         sysdate invoice_dt,
 10        launch_dt
 11   FROM c_order NATURAL
 12   JOIN product NATURAL
 13   JOIN customer
 14   )
 15   LOOP
 16       INSERT
 17       INTO invoice VALUES
 18       (
 19         invc.c_no,
 20         invc.c_name,
 21         invc.p_name,
 22         invc.qty,
 23         invc.unit_prc,
 24         invc.total_prc,
 25         invc.invoice_dt
 26       );
 27   END LOOP;
 28 END;
 29 /

PL/SQL procedure successfully completed.

SQL> |

```

Figure 10.1: Executing PL/SQL program in SQL*Plus

After the program is executed, the invoice table will be populated with the following rows.

C_NO	C_NAME	P_NAME	QTY	UNIT_PRC	TOTAL_PRC	INVOICE_DT
10	Standard Store	Washer	100	15	1500	12-SEP-13
10	Standard Store	Nail	100	10	1000	12-SEP-13
20	Quality Store	Nail	200	10	2000	12-SEP-13

40	Super Agent	Screw	400	25 10000	12-SEP-13
40	Super Agent	Super_Nut	400	30 12000	12-SEP-13

If-Then-Else Decision Logic

You can use an if statement to branch in a program. For instance, the if-then-else decision logic in Listing 10.2 treats the output rows differently based on the product launch_dt.

Listing 10.2: If-then-else decision logic

```
BEGIN
  FOR invc IN
    (SELECT c_no,
      c_name,
      p_name,
      qty,
      price unit_prc,
      (qty * price) total_prc,
      sysdate invoice_dt,
      launch_dt
    FROM c_order NATURAL
    JOIN product NATURAL
    JOIN customer
    )
  LOOP
    IF invc.launch_dt IS NOT NULL THEN
      INSERT
        INTO invoice VALUES
          (
            invc.c_no,
            invc.c_name,
            invc.p_name,
            invc.qty,
            invc.unit_prc,
            invc.total_prc,
            invc.invoice_dt
          );
    ELSE
      NULL;
    END IF;
  END LOOP;
```

```

    END LOOP;
END;
```

For this example, I'm using a `c_order` table with the following rows. The difference between this `c_order` table and the one used in the previous example is this table has a sixth row that records the sale of a product (`p_co = 6`) with a null `launch_dt`.

C_NO	P_CO	QTY	ORDER_DT
10	1	100	01-APR-13
10	2	100	01-APR-13
20	1	200	01-APR-13
40	4	400	02-APR-13
40	5	400	03-APR-13
40	6	600	01-MAY-13

Because the product's `launch_dt` is NULL, the process does not insert an invoice row for this additional order. If you execute the program in Listing 10.2, the same rows as in the previous example will be inserted into the invoice table. Exception Handling PL/SQL allows you to handle errors (or exceptions) in your program using the `EXCEPTION` statement. Its syntax is as follows.

```

EXCEPTION
WHEN exception_name
THEN exception_handling_statement;
```

For example, suppose you want to query a specific invoice from an invoice table using the PL/SQL program in Listing 10.3. The `SELECT INTO` query in Listing 10.3 stores its output rows into an `invc` variable, which is declared to have a `ROWTYPE` data type.

Listing 10.3: PL/SQL program without exception handling

```

DECLARE
    invc invoice%ROWTYPE;
BEGIN
    SELECT *
    INTO invc
    FROM invoice
    WHERE c_no = '&c_no_prompt'
```

```

AND p_name = '&p_name_prompt'
AND TO_CHAR(invoice_dt, 'DD-MON-YY') = '&invoice_dt_prompt';
dbms_output.put_line(invc.c_name || ' - ' || invc.p_name || ' - '
|| invc.total_prc);
END;

```

Assume the invoice table has the following rows.

C_NO	C_NAME	P_NAME	QTY	UNIT_PRC	TOTAL_PRC	INVOICE_DT
10	Standard Store	Washer	100	15	1500	12-SEP-13
10	Standard Store	Nail	100	10	1000	12-SEP-13
20	Quality Store	Nail	200	10	2000	12-SEP-13
40	Super Agent	Screw	400	25	10000	12-SEP-13
40	Super Agent	Super_Nut	400	30	12000	12-SEP-13

If you execute the program in Listing 10.3, you will be prompted three times to enter the invoice's `c_no`, `p_name`, and `invoice_dt` you are querying. If the invoice is not available in the invoice table, the program will abort, and you will see a “no data found” error message. Your SQL*Plus will look like this.

```

SQL> DECLARE
2   invc invoice%ROWTYPE;
3 BEGIN
4   SELECT *
5   INTO invc
6   FROM invoice
7   WHERE c_no = '&c_no_prompt'
8   AND p_name = '&p_name_prompt'
9   AND TO_CHAR(invoice_dt, 'DD-MON-YY') = '&invoice_dt_prompt';
10  dbms_output.put_line(invc.c_name || ' - ' || invc.p_name || '
- ' || invc.total_prc);
11 END;
12 /
Enter value for c_no_prompt: 10
old 7:  WHERE c_no = '&c_no_prompt'
new 7:  WHERE c_no = '10'
Enter value for p_name_prompt: Nail
old 8:  AND p_name = '&p_name_prompt'
new 8:  AND p_name = 'Nail'
Enter value for invoice_dt_prompt: 11-SEP-13

```

```

old 9:  AND TO_CHAR(invoice_dt, 'DD-MON-YY') =
      '&invoice_dt_prompt';
new 9:  AND TO_CHAR(invoice_dt, 'DD-MON-YY') = '11-SEP-13';
DECLARE
*
ERROR at line 1:
ORA-01403: no data found
ORA-06512: at line 4
SQL>

```

To handle the error (exception), you can add an exception-handling statement to the program in Listing 10.3. Listing 10.4 shows a modified version of the program in Listing 10.3. There is an exception handler in the program in Listing 10.4.

Listing 10.4: With Exception Handling

```

DECLARE
    invc invoice%ROWTYPE;
BEGIN
    SELECT *
    INTO invc
    FROM invoice
    WHERE c_no = '&c_no_prompt'
    AND p_name = '&p_name_prompt'
    AND TO_CHAR(invoice_dt, 'DD-MON-YY') = '&invoice_dt_prompt';
    dbms_output.put_line(invc.c_name || ' - ' || invc.p_name || ' - '
    || invc.total_prc);
EXCEPTION
WHEN no_data_found THEN
    dbms_output.put_line('Error: The invoice does not exist!');
END;

```

If the invoice you are querying is not in the invoice table, the WHEN `no_data_found` will trap and handle the error, and displays its message. In other words, the program will not abort. To see the exception-handler's message, issue a **set serveroutput on** command before you execute the program. The SQL*Plus console will look like this.

```

SQL> set serveroutput on;
SQL> DECLARE
2     invc invoice%ROWTYPE;
3 BEGIN

```

```

4     SELECT *
5     INTO invc
6     FROM invoice
7     WHERE c_no                = '&c_no_prompt'
8     AND p_name                = '&p_name_prompt'
9     AND TO_CHAR(invoice_dt, 'DD-MON-YY') = '&invoice_dt_prompt';
10    dbms_output.put_line(invc.c_name || ' - ' || invc.p_name || '
    - ' || invc.total_prc);
11  EXCEPTION
12  WHEN no_data_found THEN
13    dbms_output.put_line('Error: The invoice does not exist!');
14  END;
15  /
Enter value for c_no_prompt: 10
old   7:   WHERE c_no                = '&c_no_prompt'
new   7:   WHERE c_no                = '10'
Enter value for p_name_prompt: Nails
old   8:   AND p_name                = '&p_name_prompt'
new   8:   AND p_name                = 'Nails'
Enter value for invoice_dt_prompt: 12-SEP-13
old   9:   AND TO_CHAR(invoice_dt, 'DD-MON-YY') =
    '&invoice_dt_prompt';
new   9:   AND TO_CHAR(invoice_dt, 'DD-MON-YY') = '12-SEP-13';
Error: The invoice does not exist!

PL/SQL procedure successfully completed.
SQL>

```

User-defined Functions

You learned Oracle built-in functions in Chapter 9, “Built-in Functions.” Using PL/SQL you can write your own functions. The syntax for a user-defined function is as follows.

```

CREATE FUNCTION FUNCTION name(parameters)
    RETURN data_type
IS
    Variable_declarations
BEGIN
    Processing_statements
EXCEPTION

```

```
Exception_handling statements  
END;
```

For example, Listing 10.5 shows a user-defined function named `calc_new_price`. The function takes two parameters and uses the values of the parameters to calculate a new price and returns the result. If you execute the statement in Listing 10.5, a stored function named `calc_new_price` will be created and stored in your database.

Listing 10.5: Creating function `calc_new_price`

```
CREATE FUNCTION calc_new_price(  
    exist_price NUMBER,  
    change_percentage NUMBER)  
    RETURN NUMBER  
IS  
BEGIN  
    RETURN exist_price + (exist_price * change_percentage);  
END;
```

Now you can use the function just like you would any Oracle built-in function. The update statement in Listing 10.6, for example, uses the `calc_new_price` function to calculate new prices and update the product prices.

Listing 10.6: Using the `calc_new_price` function

```
UPDATE product SET price = calc_new_price(price, 0.1) ;
```

Summary

In this chapter you learned several PL/SQL features. However, what's presented here is just the tip of the iceberg. PL/SQL has many other features that you will need in real-world application development. These other features are unfortunately beyond the scope of this book.

Chapter 11

The Data Dictionary

The data dictionary of a database contains data about the data in the database. This data about data is also known as metadata. The data in the data dictionary is stored as tables. As such, you can use your SQL skills gained so far to query the data dictionary of your database. The tables and their data are maintained by the Oracle database system. You should not access the dictionary tables directly. Instead, use the Oracle-supplied views of the dictionary.

In this chapter you explore the views in the data dictionary.

The Dictionary View

The dictionary view is one of the views in the data dictionary. It returns all the views available in your dictionary. The view has two columns and can have over 650 rows.

The query in Listing 11.1 can be used to list all the views in the data dictionary.

Listing 11.1: Exploring the data dictionary

```
SELECT * FROM dictionary;
```

Here is partial output of the query in Listing 11.1. Remember, the actual output has many more rows.

TABLE_NAME	COMMENTS
ALL_XML_SCHEMAS	Description of all XML Schemas that user has privilege to reference
ALL_XML_SCHEMAS2	Dummy version of ALL_XML_SCHEMAS that does not have an XMLTYPE column
USER_RESOURCE_LIMITS	Display resource limit of the user
USER_PASSWORD_LIMITS	Display password limits of the user
USER_CATALOG	Tables, Views, Synonyms and Sequences owned by the user
ALL_CATALOG	All tables, views, synonyms, sequences accessible to the user
USER_CLUSTERS	Descriptions of user's own clusters
ALL_CLUSTERS	Description of clusters accessible to the user
USER_CLU_COLUMNS	Mapping of table columns to cluster columns
USER_COL_COMMENTS	Comments on columns of user's tables and views

Some of the views listed above will be explained in the next sections.

The User_Catalog View

The user_catalog view stores the names of your tables and views. Use the query in Listing 11.2 to see the tables and views that you have in your database. These tables and views are known as user tables and views (as opposed to system tables and views).

Listing 11.2: Using the user_catalog view

```
SELECT * FROM user_catalog;
```

The query output from running the query in Listing 11.2 in your database may not be exactly the same as what I have got here. Here is mine.

TABLE_NAME	TABLE_TYPE
CUSTOMER	TABLE
C_ORDER	TABLE
PRODUCT	TABLE
C_SHIP	TABLE
OLD_PRODUCT	TABLE
PRICE_LOG	TABLE

```

PROD_SUBST      TABLE
SHIPMENT        TABLE
PRODUCT_SELL_V  VIEW
PRODUCT_V        VIEW
PROD_SUBS_V      VIEW
PS_NONAME_V      VIEW

```

The User_Tab_Cols View

You can get table and view names from the User_Catalog view. To see the details of each table and view, can you query the user_tab_cols view. For example, the query in Listing 11.3 shows you the column names, and their data type, length, precision and scale, of the product table.

Listing 11.4: Finding out the columns metadata of the product table

```

SELECT column_name,
       data_type,
       data_length,
       data_precision,
       data_scale
FROM user_tab_cols
WHERE table_name = 'PRODUCT';

```

Here is the query output.

COLUMN_NAME	DATA_TYPE	DATA_LENGTH	DATA_PRECISION	DATA_SCALE
-----	-----	-----	-----	-----
P_CODE	VARCHAR2	6		
P_NAME	VARCHAR2	14		
PRICE	NUMBER	22	4	2
LAUNCH_DT	DATE	7		

In addition to these five columns, the USER_TAB_COLS view has many other columns, such as those for showing the owner and the default value.

The User_Procedures View

The user_procedures view contains information about your stored programs, including functions, procedures and triggers. Use the query in Listing 11.5 to show your stored programs. Note that this view has some other columns that provide more information about the stored programs.

Listing 11.5: Revealing the metadata of stored procedures and functions

```
SELECT object_name, object_type FROM user_procedures;
```

Executing the query against your database will give you something like the following output rows.

OBJECT_NAME	OBJECT_TYPE
-----	-----
CALC_NEW_PRICE	FUNCTION
UPD_PRICE	PROCEDURE
PRICE_UPD_LOGGING	TRIGGER

The User_Source View

The last view I will explain is the user_source view. This view contains the source code of your stored functions. For example, the query in Listing 11.6 returns the source of the CALC_NEW_PRICE function.

Listing 11.6: Reading the source code of a function

```
SELECT line, text FROM user_source WHERE name = 'CALC_NEW_PRICE';
```

Executing the query will show you the lines of codes of the function as shown here.

NAME	TYPE	LINE	TEXT

CALC_NEW_PRICE	FUNCTION	1	FUNCTION calc_new_price(
CALC_NEW_PRICE	FUNCTION	2	exist_price NUMBER,
CALC_NEW_PRICE	FUNCTION	3	inc NUMBER)
CALC_NEW_PRICE	FUNCTION	4	RETURN NUMBER
CALC_NEW_PRICE	FUNCTION	5	IS
CALC_NEW_PRICE	FUNCTION	6	BEGIN
CALC_NEW_PRICE	FUNCTION	7	RETURN exist_price + (exist_price *
			inc);
CALC_NEW_PRICE	FUNCTION	8	END;

Summary

The data dictionary contains the metadata of your database. In this chapter you learned to use some of the views in the data dictionary.

Appendix A

Installing Oracle Database XE

To try out the examples in this book, you need an Oracle database. Because you need to create tables and other objects, as well as store and update data, it is best if you have your own database. Fortunately, you can download Oracle Database Express Edition (a.k.a. XE) for free from Oracle's website. As you will learn in this appendix, Oracle Database XE comes with a tool called SQL*Plus that you can use to run SQL statements.

Downloading Oracle Database XE

This database software can be downloaded from this web page.

<http://www.oracle.com/technetwork/indexes/downloads/index.html>

Scroll down until you see Database 11g Express Edition on the list and click the link. Then, select the version for your platform (Windows or Unix) and follow the download instructions. You will be requested to accept the license agreement and, if you don't have one already, create an account. Don't worry, creating an account is free.

Note

The book examples are tested on Windows. They should work equally well on Unix. The following installation guide is for Windows only.

Installing Oracle Database XE

Unzip the downloaded file to a folder in your local drive, then double-click the setup.exe file. You will see the Install Wizard welcome window like that in Figure A.1.

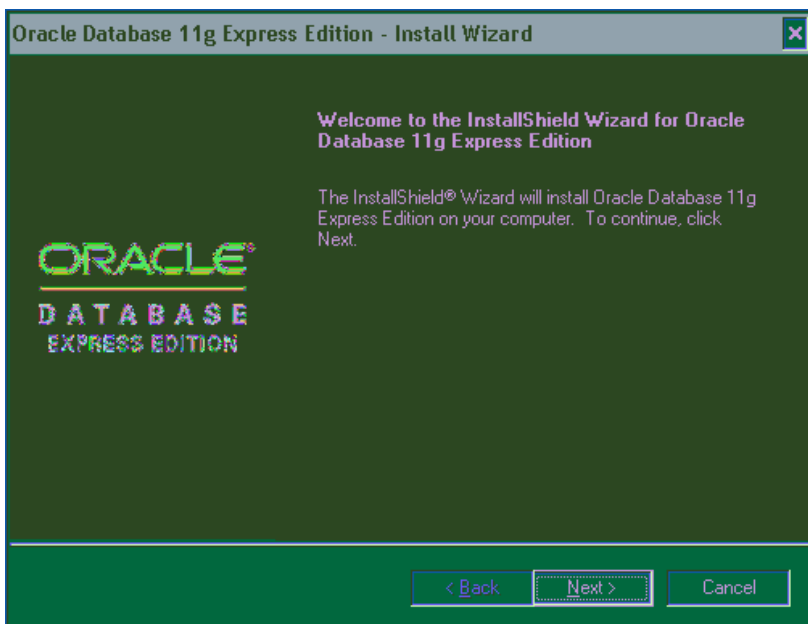


Figure A.1: The Welcome page of the Install Wizard

Click the Next button, accept the agreement on the License Agreement window, and click the Next button. The next window that will appear is the “Choose Destination Location” window like the one in Figure A.2.

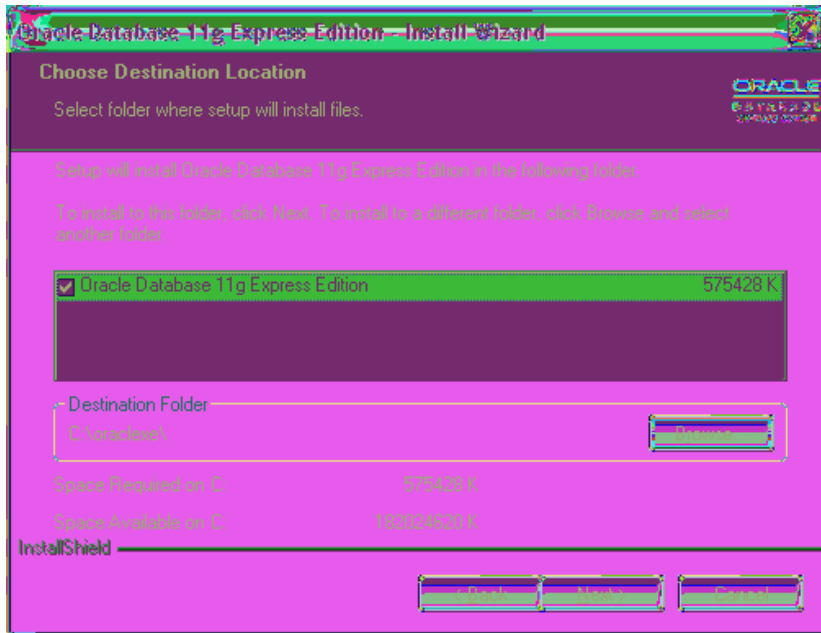


Figure A.2: Choosing the installation destination

Click the Browse button and navigate to a directory of your choice, then click the Next button. If you are prompted to enter port numbers, just accept the defaults (you might need to change, if for example the suggested default port numbers are already used). After that, click the Next button. You will be presented with the Passwords window (See Figure A.3)

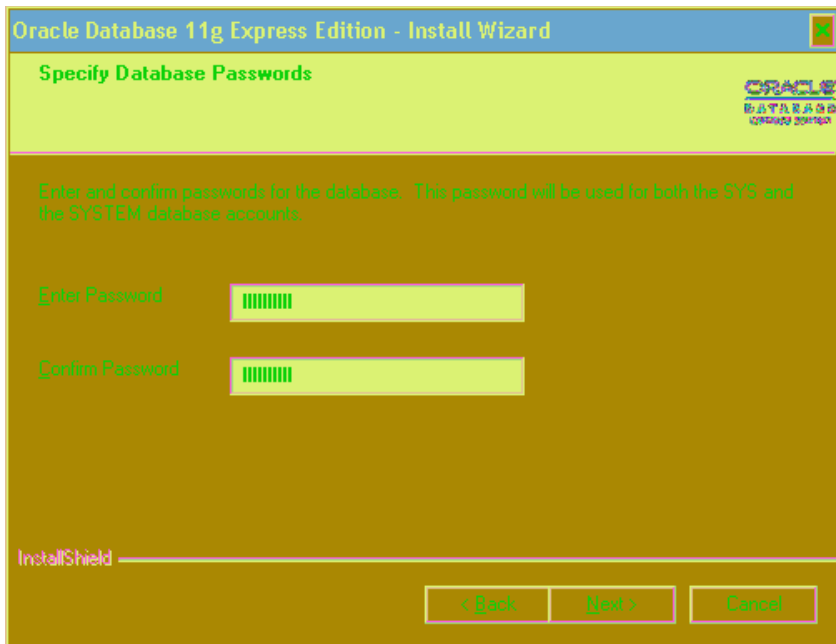


Figure A.3: Entering and confirming the password

Enter your password and confirm it. Make a note of this password as you will need it. Note that this password is for both the SYS and SYSTEM accounts. Then, click the Next button and you will see the Summary window (See Figure A.4)

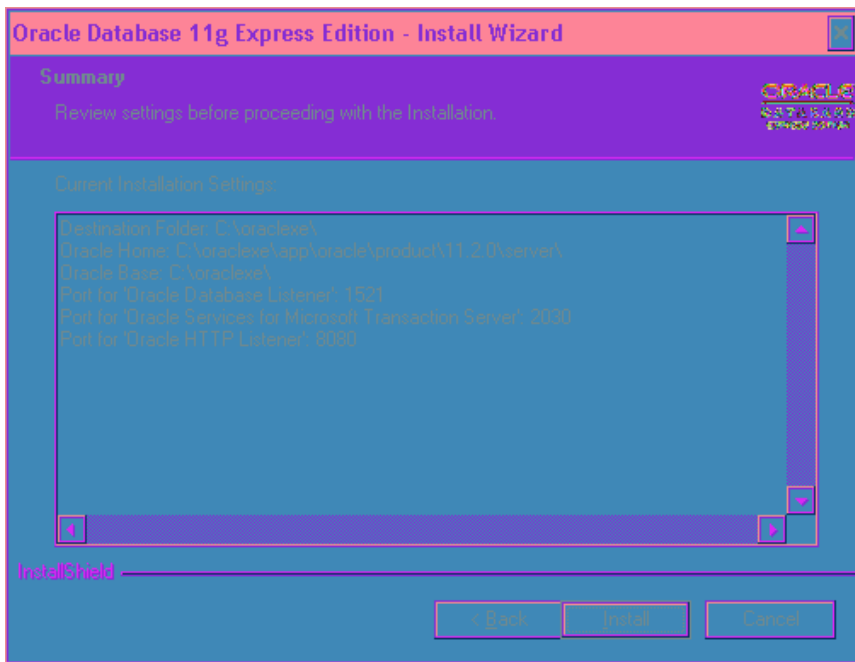


Figure A.4: The Summary window

Click the Install button, and on the window that appears next (the Installation Completion window), click the Finish button.

The next section shows you how to create a database user that you will use to test the book examples.

Creating a User with SQL*Plus

To create a database user and to run an SQL statement, use SQL*Plus, a tool that comes with the Oracle database. To run SQL*Plus, select “Run SQL...” from your Windows Start menu, as shown in Figure A.5.

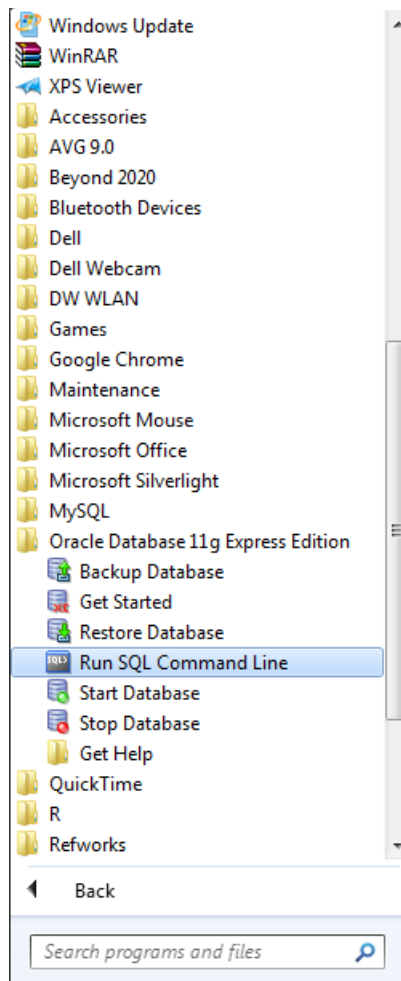


Figure A.5: Selecting the Run SQL Command Line

SQL*Plus will open, as shown in Figure A.6. SQL*Plus is the command-line console client of the Oracle database. You use it, among other things, to enter and execute SQL statements and PL/SQL programs.

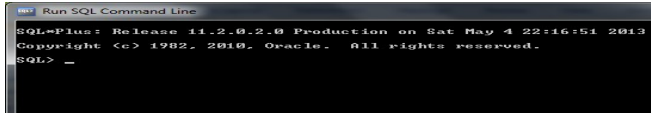


Figure A.6: The SQL*Plus console

Connect as SYSTEM by typing the following command and pressing Enter

```
CONNECT SYSTEM/password AS SYSDBA;
```

Here, *password* is the password of the SYSTEM user you entered during installation. To create a user, enter and execute the following command.

```
CREATE USER name IDENTIFIED BY password;
```

Replace *name* with the actual user name you want to create and *password* with a password. For example, the following command creates a user named john with password secret.

```
CREATE USER john IDENTIFIED BY secret;
```

Next, enter and execute the following command, replacing *name* with the user name used in the previous command:

```
GRANT ALL PRIVILEGES TO name;
```

The GRANT ALL command gives the specified users all available permissions. Giving a user all privileges may not be a wise thing to do in a real life system.

The user now has permissions to test the book examples. To log on, enter this command to SQL*Plus.

```
CONNECT name/password;
```

For example

```
CONNECT john/secret;
```

A database named “XE” was created during installation. The CONNECT command above connects you to this database.

You are now set to test the book examples.

Appendix B

Oracle Built-in Data Types

The Oracle database has 18 built-in data types, shown in Table B.1.

Data Type	Description
VARCHAR2(<i>ml</i>)	Variable-length character string having a maximum length of <i>ml</i>
NVARCHAR2(<i>ml</i>)	The Unicode version of VARCHAR2
NUMBER(<i>p</i> , <i>s</i>)	Number having precision <i>p</i> and scale <i>s</i>
DATE	Valid date ranging from January 1, 4712 BC, to December 31, 9999 AD
BINARY_FLOAT	32-bit floating point number
BINARY_DOUBLE	64-bit floating point number
TIMESTAMP	The year, month, and day values of the date, plus the hour, minute, and second values of the time
INTERVAL YEAR	Stores a period of time in years and months
INTERVAL DAY	Stores a period of time in days, hours, minutes, and seconds
RAW(<i>size</i>)	Raw binary data of the length of <i>size</i> bytes
LONG RAW	The larger version of RAW
ROWID	Base-64 string representing the unique address of a row in its table
CHAR(<i>l</i>)	Fixed-length character string having length <i>l</i>
NCHAR(<i>l</i>)	Unicode version of CHAR
CLOB	A character large object containing single-bytes or multi-byte characters
NCLOB	Unicode version of CLOB
BLOB	A binary large object
BFILE	Contains the locator to a large binary file stored outside the database

Table B.1: Oracle Built-in Data Types

Appendix C

Indexes

An index entry of the Index section of a book points to the location of the word/phrase indicated by the entry. The index entry helps you find the pages containing the word/phrase. Similarly, a column index of a table can speed up your finding data in a database. If your query has a condition on a column (or columns) that is (are) not indexed, the table will be fully scanned and the query will be slower than if an index was available.

This appendix shows you how to create various indexes. The topics covered are as follows.

- Creating an index
- Multi-column indexes
- Bit map and join bit map indexes
- Function-based indexes
- Deleting an index

Creating an Index

To create an index on a column or columns of a table, use this statement.

```
CREATE INDEX index ON table (columns);
```

For example, the statement in Listing C.1 creates an index named `p_name_ix` on the `p_name` column of the product table.

Listing C.1: Creating an index on the `p_name` in the product table

```
CREATE INDEX p_name_ix ON product (p_name);
```

Unique Index Names and Columns

You cannot have duplicate index names. In addition, you cannot have the same column(s) indexed more than once.

Multi-Column Indexes

An index can be based on multiple columns. A multi-column index is useful when you need to search on rows having the same value on an indexed column. For instance, if your query has to search on the `p_name` column of the product table and there can be more than one row with the same `p_name` but with different launch dates, it would help if you create an index on both `p_name` and `launch_dt`.

As an example, the statement in Listing C.2 creates a multi-column index on the `p_name` and `launch_dt` columns of the product table.

Listing C.2: Creating an index on multiple columns

```
CREATE INDEX p_name_launch_ix ON product (p_name, launch_dt);
```

Bitmap Indexes

The indexes created in Listings C.1 and C.2 are ordinary indexes, which are technically called B-tree indexes. Another type of index, the bitmap index, can be a better choice for tables whose rows will not be changed concurrently, such as in a low-volume data entry environment. A product table is an example of such low data maintenance and therefore is suitable for bitmap indexes. By contrast, the customer order table gets rows inserted more frequently and is not a good candidate for bitmap indexes.

For example, the statement in Listing C.3 creates a bitmap index named `order_ibx` on the `c_order` table.

Listing C.3: Creating a bitmap index

```
CREATE BITMAP INDEX order_bix ON c_order (p_code, c_no);
```

Bitmap Join Indexes

The bitmap join index is a variant of the bitmap index. The bitmap join index is specifically created to expedite column retrieval from a joined table in a join query.

For example, the statement in Listing C.4 creates a bitmap join index on the `c_name` column. Note that the syntax for creating a bitmap join index has additional clauses, `FROM` and `WHERE`. These clauses define the join of the tables.

Listing C.4: Creating a bitmap join index on the `c_name` column

```
CREATE BITMAP INDEX c_name_bji ON c_order(c.c_name)
FROM c_order o, customer c
WHERE o.c_no = c.c_no;
```

`c_name` can now be retrieved faster using the index than if it has to be scanned from the `c_order` table.

While the aim of having a bitmap join index is to expedite a specific column retrieval (`c_name` in the statement in Listing C.4), joining tables generally make use of the primary key indexes of the tables as they are mostly joined on these keys. If you often need to join on other columns, you may want to create indexes on these columns as well.

Function-based Indexes

There are often cases where capitalization is used inconsistently when entering data into a table. Sometimes, a column value is entered in all capitals, sometimes in lowercase, and sometimes in mixed cases.

For example, the following customer table shows inconsistent capitalization has been used for the `c_name` column.

C_NO	C_NAME	PHONE
10	Standard Store	1-416-223-4455

```

20   Quality store   1-647-333-5566
30   Branch Office  1-416-111-2222
40   Super Agent    1-226-777-8888
50   New Brand      1-905-777-9999
60   NEW STORE      1-905-000-9999

```

This poses a problem because a query may not return all the data intended. For example, in the case of the customer table above, searching on “new store” will not find “NEW STORE.” To get around this problem, you can use the UPPER function in your query, as shown in Listing C.5.

Listing C.5: Using the UPPER function in a query

```
SELECT * FROM customer WHERE UPPER(c_name) LIKE '%STORE';
```

For this query to run faster, you should also create an index that is based on the UPPER-ed version of the c_name column. Listing C.6 shows how to do it.

Listing C.6: A function-based index

```

CREATE INDEX func_name_ix ON customer
  (UPPER(c_name)
   ) ;

```

Deleting An Index

To delete an index of any type, use the DROP INDEX statement. For example, the statement in Listing C.7 deletes the s_name_bji index.

Listing C.7: Deleting a bitmap join index

```
DROP INDEX s_name_bji;
```

Index

ABS function.....	85
aggregate function.....	29
alias.....	25
ALL operator.....	66
American National Standards Institute.....	1
ANSI.....	1
ANY operator.....	66
AS keyword.....	50
asterisk.....	14
B-tree index.....	124
BETWEEN Operator.....	20
BFILE data type.....	121
BINARY_DOUBLE data type.....	121
BINARY_FLOAT data type.....	121
bitmap join index.....	125
BLOB data type.....	121
built-in function.....	85, 105
CHAR data type.....	121
CLOB data type.....	121
COALESCE function.....	93
column alias.....	50
comparison operator.....	23
compound condition.....	16
CONCAT function.....	88
CONNECT command.....	5
CREATE TABLE statement.....	6, 7, 23
CREATE VIEW statement.....	79
CURRENT_DATE function.....	91
data definition language.....	1
data dictionary.....	107
data manipulation language.....	1
data type.....	121
DATE data type.....	121
datetime function.....	91
DELETE statement.....	10, 11

dictionary view.....	107
DISTINCT keyword.....	28
expression.....	26
foreign key.....	47
FROM clause.....	13
FULL outer join.....	53
GRANT ALL command.....	119
group.....	41
GROUP BY clause.....	41, 44
HAVING clause.....	43
HAVING condition.....	43
IBM.....	1
if-then-else.....	101
IN operator.....	20, 65
index entry.....	123
inner join.....	53
INSERT statement.....	7
INTERSECT operator.....	76
INTERVAL DAY data type.....	121
INTERVAL YEAR data type.....	121
IS NOT NULL operator.....	23
IS NULL operator.....	23
join.....	47
JOIN clause.....	47, 48
JOIN keyword.....	48
LEFT outer join.....	53
LENGTH function.....	90
LIKE operator.....	21, 22
LONG RAW data type.....	121
metadata.....	107
MINUS operator.....	77
MySQL.....	1
NATURAL keyword.....	61
NCHAR data type.....	121
NCLOB data type.....	121
NOT IN operator.....	65
NOT operator.....	19, 23
NULL.....	11, 42, 55
NULLIF function.....	94
NUMBER data type.....	121
NVARCHAR2 data type.....	121
NVL function.....	95
operator.....	16
Oracle database.....	1, 5
Oracle Database XE.....	5
downloading.....	113
installation.....	114
ORDER BY clause.....	74

ORDER clause.....	41
outer join.....	53
PL/SQL.....	2, 97
predicate.....	16
primary key.....	7, 47
query.....	13
query output.....	37
RAW data type.....	121
RDBMS.....	1
relational database.....	5
RIGHT outer join.....	53
ROLLBACK command.....	10, 11
ROUND function.....	86
ROWID data type.....	121
ROWNUM.....	27
SELECT clause.....	13, 14, 26
SELECT statement.....	13, 15, 18, 41, 48, 74, 79
SIGN function.....	87
SQL.....	
2008 standard.....	1
2011 standard.....	1
SQL reserved words.....	3
SQL*Plus.....	5
Structured Query Language.....	1
subquery.....	63, 66
comparison operator.....	65
multiple-row.....	65
nested.....	69
single-row.....	63
SUBSTR function.....	90
table alias.....	50
TIMESTAMP data type.....	121
TO_CHAR function.....	92
TRUNC function.....	87
UNION ALL operator.....	73
UPDATE statement.....	9, 11
UPPER function.....	89
user_catalog view.....	108
user_procedures view.....	110
user_source view.....	110
user_tab_cols view.....	109
USING keyword.....	61
VARCHAR2 data type.....	121
view.....	79
nested.....	83
view management.....	83
WHERE clause.....	9, 10, 13, 44, 65
WHERE condition.....	11, 43, 68

wildcard character.....	22
-------------------------	----